



# Smart and Sustainable: Campus as a Living Laboratory

# Overview

- Introduction
- Our historical Sustainability Path
- Campus as a Living Laboratory takes Shape
- Q&A

# Introduction

- Facilities Planning Maintenance and Operations has been a leader
  - Internally and Externally
- FPMO designates Staff to oversee, coordinate & facilitate sustainability efforts
  - EMC chairs the District Sustainability Committee
  - Sustainability Specialist (FICCS) co-chairs the District Sustainability Committee and acts as liaison/assistant to the Campus Committees
  - FM's co-chair Campus Sustainability Committees
- Each Campus has developed its own Sustainability plan
  - Significant overlap between the plans
  - Formal efforts are still in their early stages
- Each campus has a Sustainability Committee
  - Charged with implementing and developing the Sustainability Plan
  - Organized through the Participatory Governance process
  - Meet regularly
  - Representatives from each campus committee on the District Sustainability Committee

# History: SMCCCD



# History: Sustainability Planning

## Sustainability Vision Statement

*Cañada College will be a model for environmental sustainability, inspiring and empowering our community to implement sustainable practices and promote social equity.*

## Sustainability Vision Statement

*CSM will be a model for sustainability, inspiring and empowering our community to implement sustainable economic and environmental practices and promote social equity in all aspects of the college's mission and operations.*

*By adopting this Sustainability plan CSM commits to address the impacts of climate change and develop green curriculum to educate students for the challenges of the 21st century.*

## Sustainability Vision Statement

*Skyline College will inspire a collaborative, global community of learners to empower and transform the College and the community, advancing social equity through environmental stewardship and sustainable practices.*

# CaaL Takes Shape





# Mission:

- To create and bolster opportunities for strong partnerships between students, staff, and the greater SMCCCD community

# Vision:

- Provide interactive, innovative and sustainable learning environments

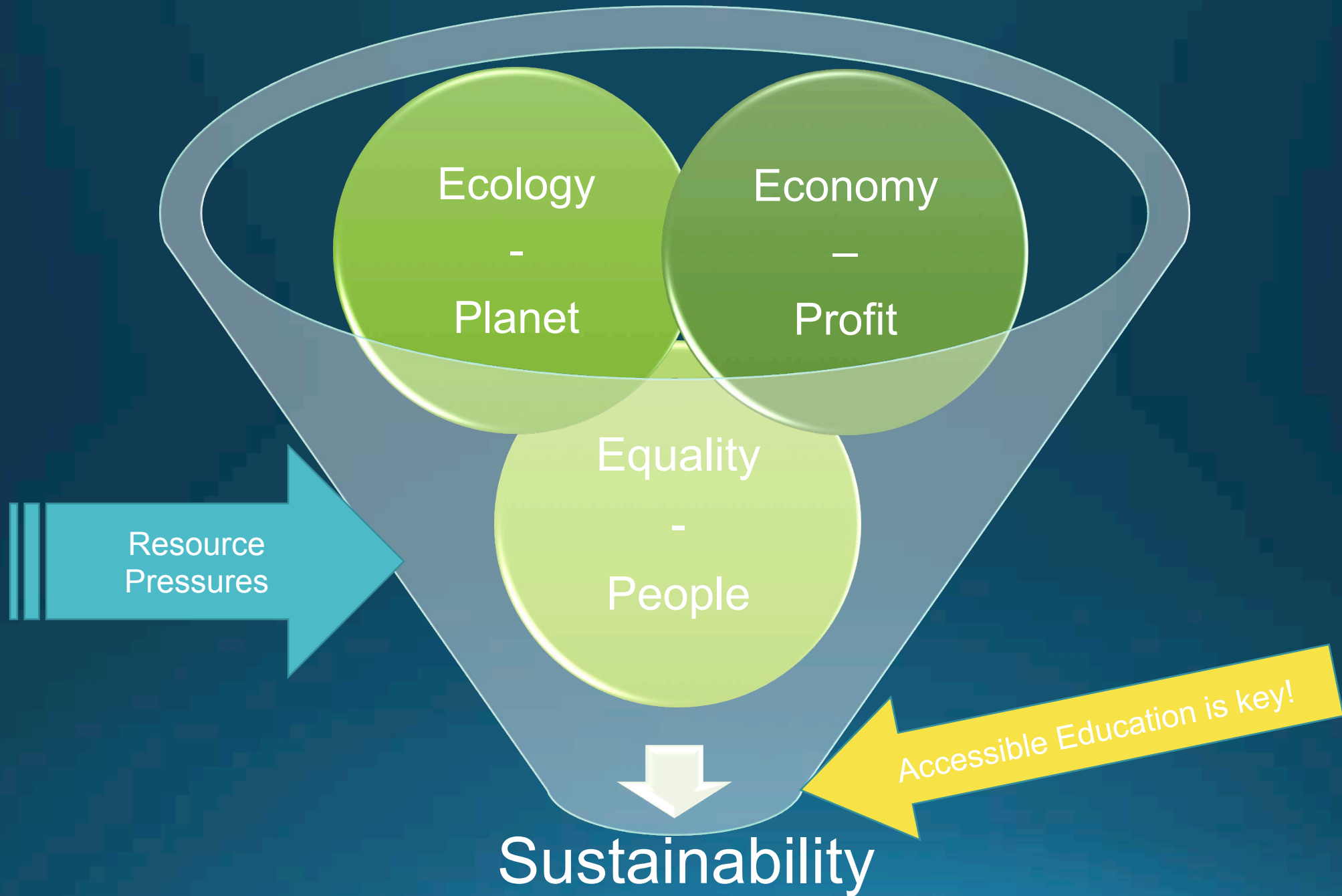
# Values:

- Prioritize learning opportunities in everything we do
- Continuous environmental, economic and societal improvement through accessible education
- Openly share challenges and successes
- Never rest in complacency



# History: Defining Sustainability

Raising awareness of the need for social, environmental and economic balance through accessible education;  
And taking actions that enable future generations to thrive and achieve that balance.



# Smart Infrastructure

- Cañada College Solar Photovoltaic ~1.25MW
- Cañada College LED Roadway & Parking Lot Lights
- College of San Mateo LED Roadway & Parking Lot Lights
- College of San Mateo Internet of Energy Project
- District Wide Sub-metering (M&V)
- District Wide EV Charging Stations
- District Wide Energy Information System
- College of San Mateo Co gen Replacement
- Skyline College Co gen Replacement

# Energy Efficient Lighting



# Solar Power



# Electric Vehicle Charging Stations

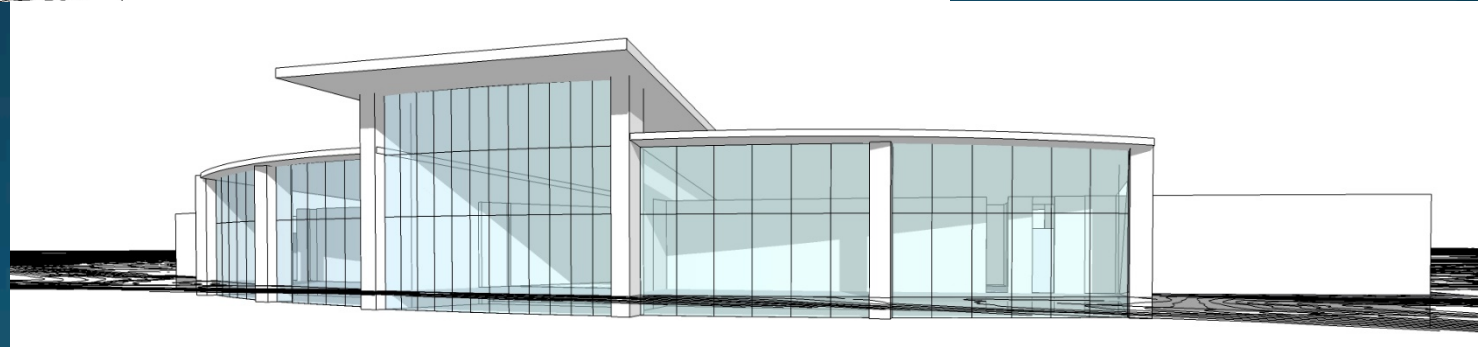
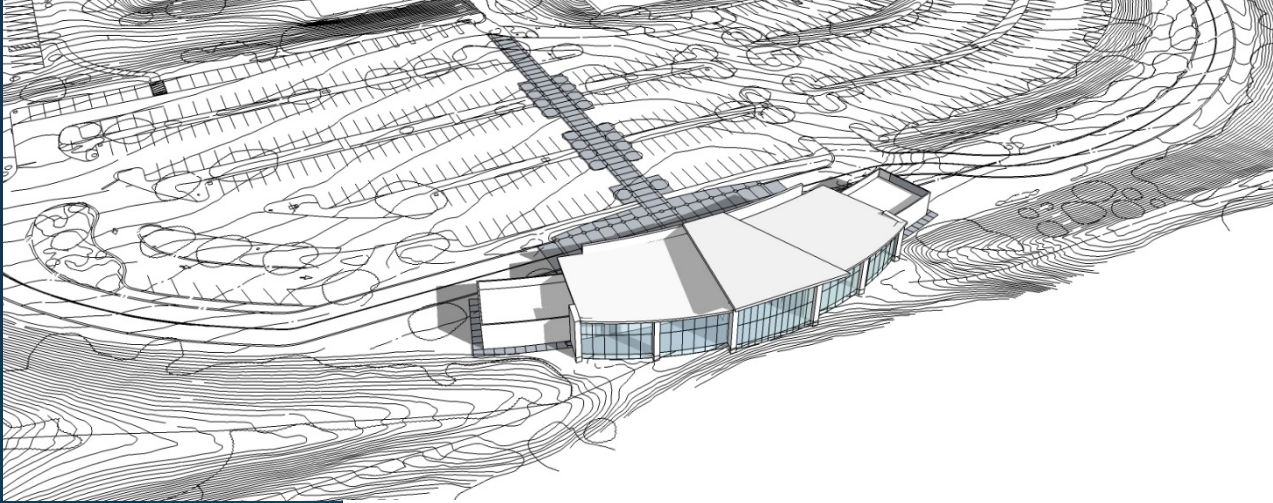


# CSM B19 Engineering/Emerging Technologies



Building Modernization

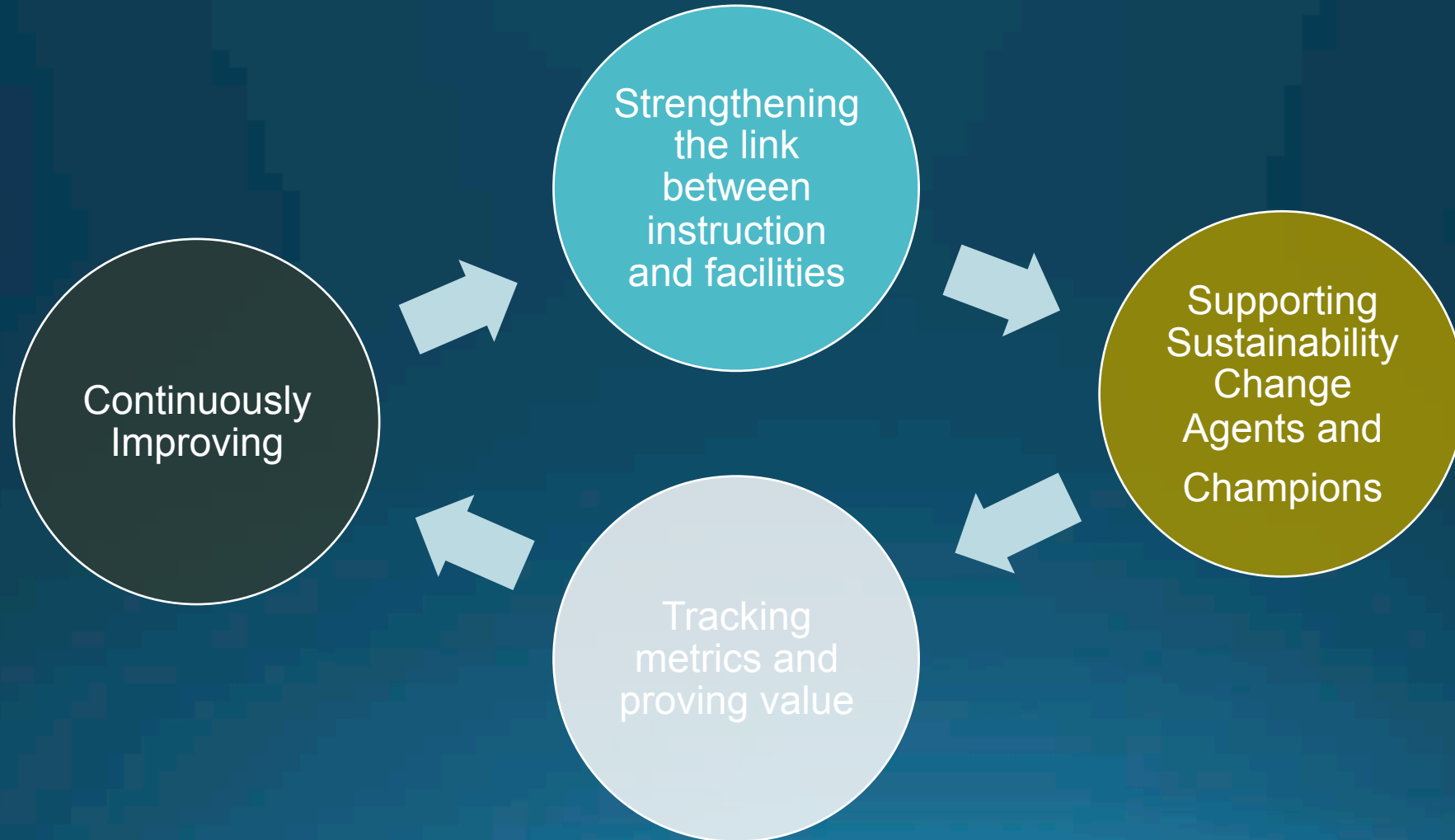
# Skyline College Environmental Sciences



New Construction



# Implementation Benefits



# Thank you and Remember...

Have fun at work and celebrate the victories... even the small ones

Joe Fullerton  
Energy Management Coordinator  
Facilities Planning, Maintenance and Operations  
San Mateo Community College District  
3401 CSM Drive  
San Mateo, CA 94402  
O: 650-358-6848  
C: 650-339-0836



THANK YOU!