

# Green for Health Care

Marcia Lochmann

Director of College Partnerships for the Illinois Green Economy Network

IGEN Green Health Care Work Group Member

Credit to Ben Newton, Richland Community College, IGEN Member



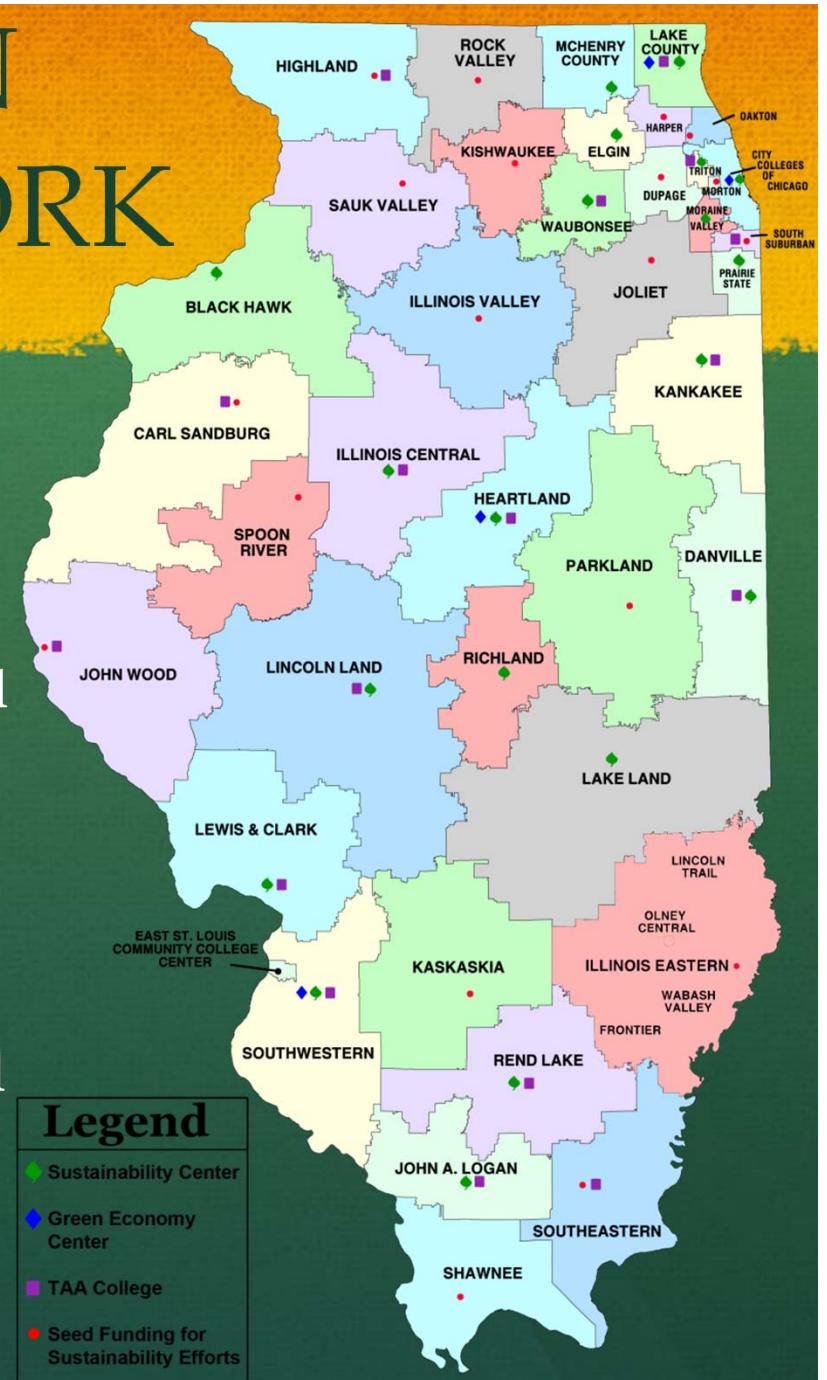
# Overview

- Background
- Setting the stage
- Greening Health Care
  - Examples
  - Resources
- Getting started
  - Green action teams
  - Champions
  - Benchmarking and goal setting

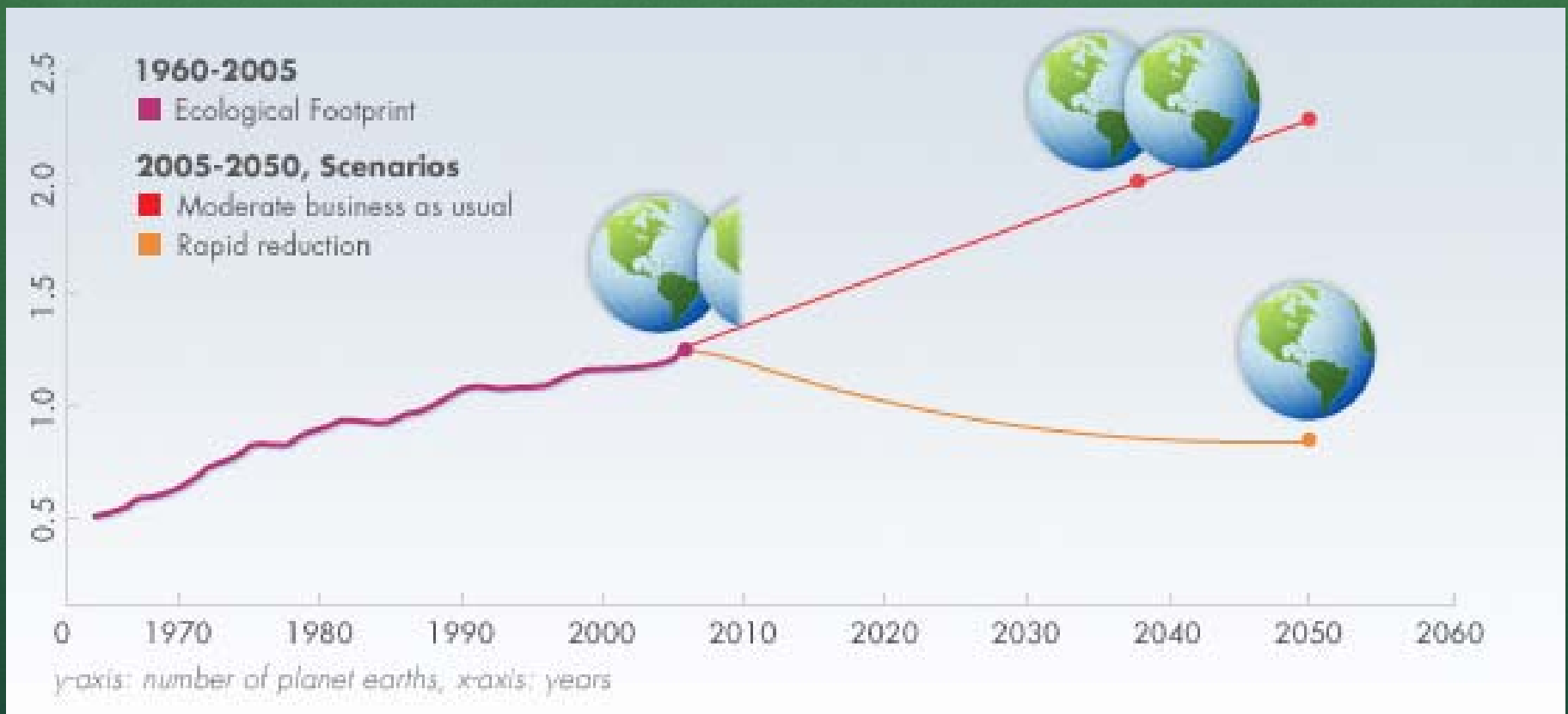


# ILLINOIS GREEN ECONOMY NETWORK

- President-led consortium of all 48 Illinois community colleges
- Provides platform for collaboration to identify, establish, share best practices, and promote sustainability initiatives.
- IGEN builds cooperative efforts among community college faculty, staff and students and our community partners to catalyze sustainability implementation and green economic growth throughout the state.



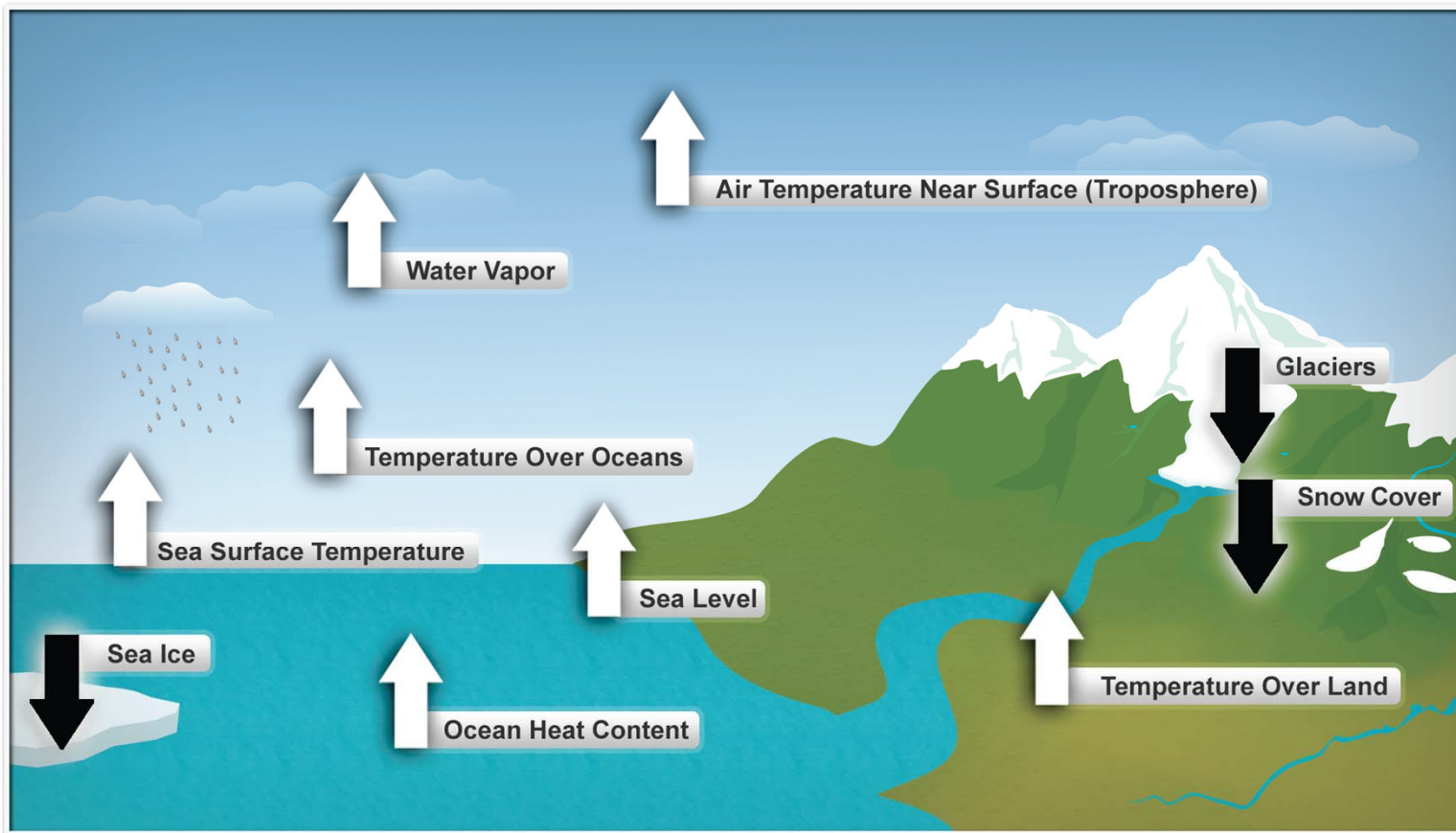
# Limited Resources



Source: [www.globalfootprintnetwork.org](http://www.globalfootprintnetwork.org)

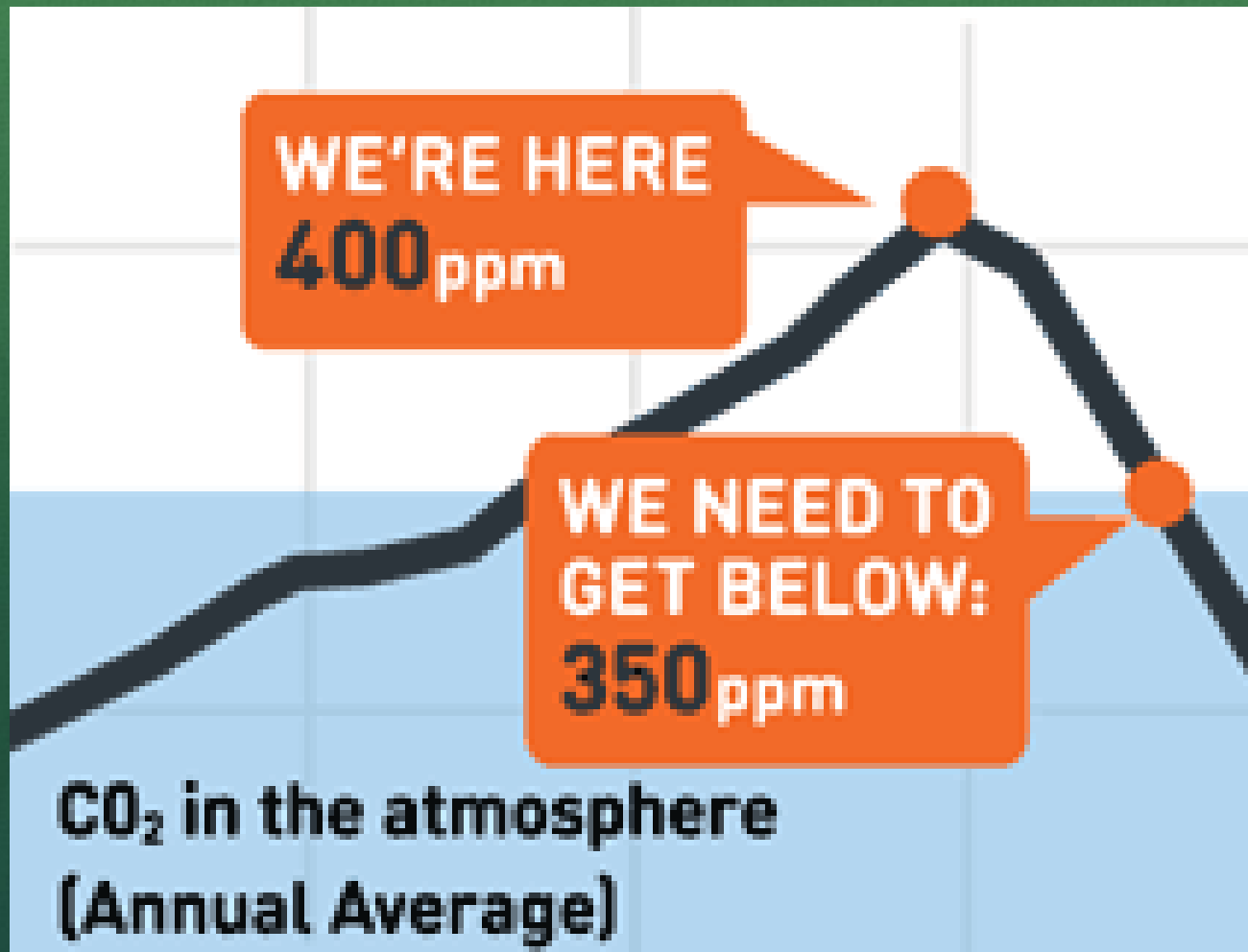
# Climate Change

## Ten Indicators of a Warming World

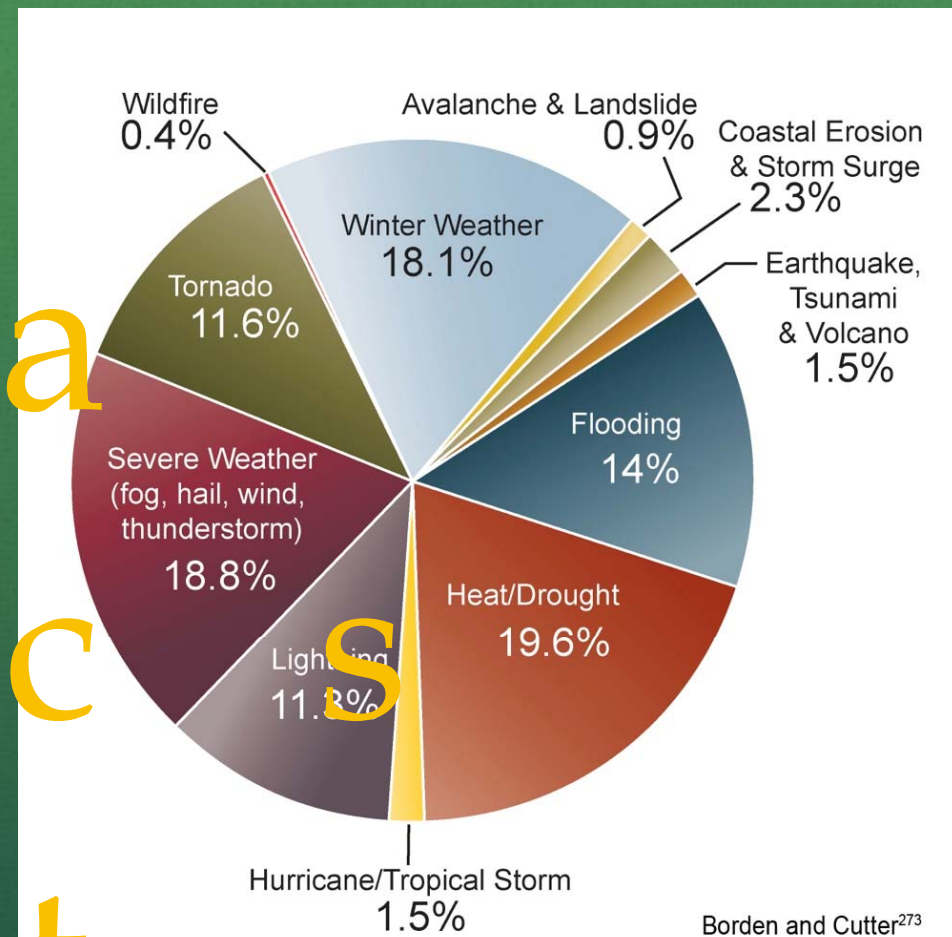




# Climate Change



# Impact



Borden and Cutter<sup>273</sup>

The pie chart shows the distribution of deaths for 11 hazard categories as a percent of the total 19,958 deaths due to these hazards from 1970 to 2004. Heat/drought ranks highest, followed by severe weather, which includes events with multiple causes such as lightning, wind, and rain.<sup>273</sup> This analysis ended prior to the 2005 hurricane season which resulted in approximately 2,000 deaths.<sup>229</sup>



# Population Growth

<http://video.nationalgeographic.com/video/the-magazine/the-magazine-latest/ngm-7billion/>



# 2013 **WORLD POPULATION** DATA SHEET

Explore population trends through graphics



<http://www.prb.org/wpds/2014/>

# The Ecological Footprint

## MEASURES

how fast we consume resources and generate waste



Energy



Settlement



Timber & paper



Food & fibre

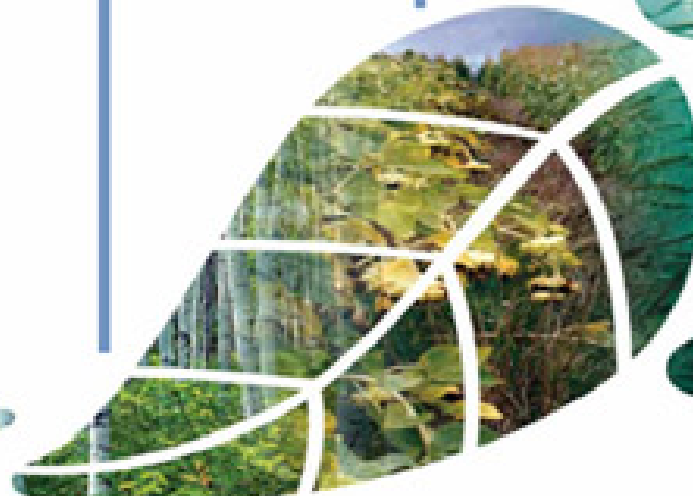


Seafood

COMPARED TO  
how fast nature can absorb our waste and generate new resources.



Carbon Footprint



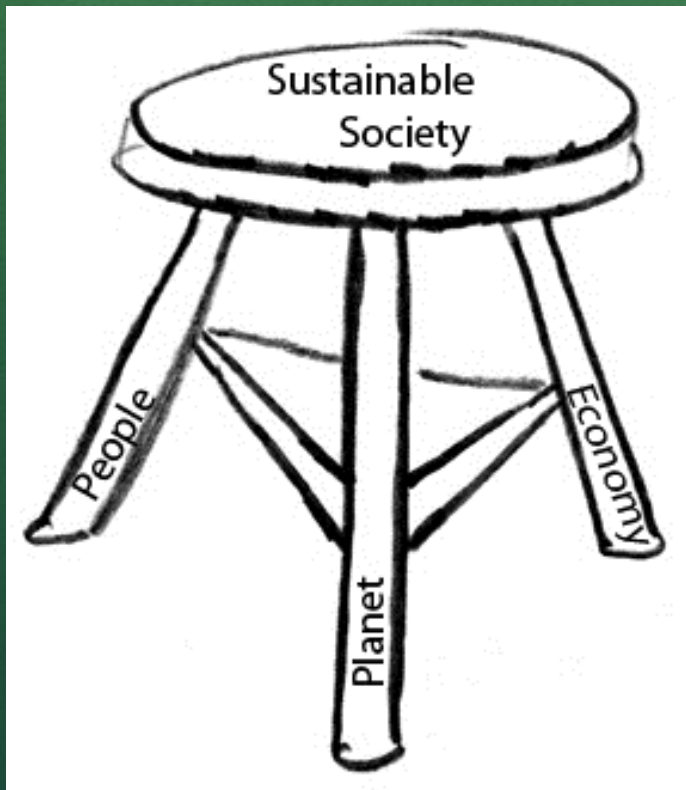
Forest



Cropland & pasture

Fisheries

# What's the Green Connection?





# Sustainability and Health Care

## Environment

Energy usage

Energy efficiency

Hazardous waste

Radioactive waste

Building construction  
and decommissioning

Ethical sourcing of  
products

Recycling

Herbal medicines

Natural resource use (for  
equipment, medicines  
and food)

## Social

Access to care for those  
in need

Testing and patient trials

Eastern medicine

Herbal medicines

Western medicine

Prescription drugs

Drug addiction

Infectious diseases' in the  
workplace

In vitro fertilization

Stem cell research

## Economic

Prohibitive costs

Equal access

State funded healthcare

Private healthcare

Insurance premiums

Medical lawsuits

# Measure to Manage



# A New Culture

- Leadership
- Vision
- Planning
- Accountability and Measurement
- Education and Communication within the Hospital
- Communication with the Community
- Program Partners



# Building Your Team

- Trustees
- CFO
- CEO
- COO
- Sustainability Managers
- Custodial
- Public Safety
- Facilities
- Volunteers
- CHAMPIONS
  - green action teams
  - regular meetings and incentives
  - fun enforcement (phone pics)

# Green Health Care Checklist

- Education and Organization Sustainability Efforts
  - Mission Statement, Green Team
- Buildings and Grounds
  - Energy, Water, Native Plants, USGBC LEED
- Operations
  - Waste, Environmental Services, Food Services
- Purchasing
- Patient Care
- Transportation

*Complete this checklist with your senior management team, to begin assessing your current engagement to environmental sustainability practices. Use the checklist to discuss possible next steps for integrating sustainability into your facility.*

Action Item	Yes	In Progress	No	Comments or Next Steps
The executive team and board have been introduced to environmental sustainability in health care.				
A board member or board committee has oversight of environmental sustainability.				
The hospital has a written environmental sustainability policy.				
A specific staff person or team is accountable for planning and implementing sustainability initiatives.				
The hospital has identified its current environmentally sustainable practices.				
The hospital has assessed compliance risks, costs, benefits and ROI for specific (planned or implemented) sustainability initiatives.				
The hospital has a sustainability plan with priorities, goals and timetables for implementation.				
The hospital tracks the financial, operational, environmental, legal and other impacts of sustainability initiatives.				
The hospital communicates its commitment to sustainability to patients, staff and the community.				

# Financing

- Low hanging fruit first – no cost or low cost
- State and Federal Incentives
- Revolving Loan Fund
- Community

# Benefits

- Performance excellence
- Cost savings
- Compliance and Risk Reduction
- Mission and Community Relations



# St. Mary's Green Team

- Facilities, Surgery, Administration, Sports Medicine, Marketing, and Waste Contractor
- Green Fund budget from scrap metal
- Service huddles with waste contractor
- Community programs- tree planting, electronics recycling day for staff
- My fitness pal app with Sodexo scans barcodes in cafeteria

# St. Mary's Goals for 2013

- Eliminate Styrofoam
- Eliminate/reduce Mercury (medicine)
- Reduce Confidential Waste Day
- Partnerships with Richland Ecoland club
- Well water for plantings
- Grease recycling
- Donations to the Mission
- Green Section on website

# Best Practices

- St. John's Hospital Springfield, IL
- Kaiser Permanente (West coast and Georgia)
  - Fact Sheets on Climate Change-reduce 30% by 2020, Safer Chemicals- PVC Free, Sustainable Food- Increase to 20% by 2015
- Dignity Health (San Francisco , CA)
  - Saved 5.6 million by increasing use of reusable products
  - Reusable sharps containers eliminated over 1 million tons of red plastic and 73,000 tons of cardboard
  - Healthier Hospitals Initiative April 2012



# First, DO NO HARM

## Precautionary Principle

- Less than 1% LEED certified buildings
- Second most energy intensive commercial building type behind food industry
- Annually 5 million tons of waste
- Huge water quantities
- Pump in fresh air to reduce infection
- Medical waste burned in incinerators
  - Dioxins, mercury, toxins

# Green Health Care findings

- Already mechanisms in place working with hospitals (Practice GreenHealth, Green Teams, Waste Contractors, Kaiser Permanente Sustainability Scorecard for Medical Products)
- Partnerships with Hospital Green teams
- Policies- Mercury free, DEHP Free (Phalates in flexible PVC and IV Bags/tubing), Pharmaceutical disposal, green cleaners
- USGBC LEED for Healthcare
- Appeal to Patients?



Home » About HHI



## What We Do

HHI Admin - Date: 1/25/2012 - 11:25 am

The Healthier Hospitals Initiative is a call-to-action for an entire industry. It is an invitation for healthcare organizations across the country to join the shift to a more sustainable business model, and a challenge for them to address the health and environmental impacts of their industry.

By creating a collaborative setting which engages all stakeholder groups and gives each individual player the tools they need to succeed, HHI has created a platform to help healthcare organizations affect widespread, meaningful change.

Through the collaboration of world-renowned industry experts, HHI has developed and is proud to feature a suite of tools intended to make the fulfillment of this mission as easy as possible:

- Easy-to-use mechanisms for identifying metrics and collecting data
- Access to a broad-based community through the HHI network
- Hospital-to-hospital mentorship programs
- Interactive, content-focused webinars
- Detailed "How-To Guides" for each Challenge area
- Insight into how others have achieved success – case studies, success stories, leadership insights

### About HHI

- [What We Do](#)
- [Who We Are](#)
- [Participating Hospitals](#)
- [Business Supporters](#)
- [Supporting Organizations](#)
- [Contact Us](#)

### Enroll Now with HHI



Three organizations and Eleven Sponsoring Health Systems invite you to join them in leading communities to a healthier future. Enroll in healthier hospitals initiative. [Learn More](#)

### Connect with HHI



### Become a Sponsor

Hospitals rely on responsible business partners to meet their environmental goals. Demonstrate leadership in the sector – Become a Business Sponsor of Healthier Hospitals Initiative

[Learn More](#)





ISSUES

- Waste Management
- Toxic Materials
- Mercury
- PVC and Phthalates
- Flame Retardants
- Electronics
- Cleaners and Pesticides
- Safer Chemicals
- Healthy Food Systems
- Green Building and Energy
- Climate and Health
- Green Purchasing
- Pharmaceuticals
- Environment and Health

"Leading the global movement for environmentally responsible health care"

Latest News

US & Canada | Europe | SE Asia | América Latina | Global Projects

Today's Feature

January 19, 2013  
Health Care Without Harm Press Release

**World's Governments Agree to Mercury-Free Healthcare in 2020**

The world's governments have finalized text for a global legally binding treaty on mercury, the bio-accumulative heavy metal that is poisoning the world's fish supply, threatening public health and the environment. Among other measures, the treaty text mandates an end to the manufacture, import and export of mercury thermometers and blood pressure devices (sphygmomanometers) by 2020. [more](#)



SELECT A REGION

- US and Canada
- Europe
- Southeast Asia
- América Latina - Español
- América Latina - Português
- Global Projects & Other Regions

search

Leading the Health Care Sector to Sustainability



Practice Greenhealth, HCWH, and the Healthier Hospitals Initiative describe strategies and resources for bringing sustainable practices to the health care sector. [enlarge video](#)



Health Care Without Harm is an international coalition of more than 470 organizations in 52 countries working to transform the health care sector so it is no longer a source of harm to people and the environment. [enlarge video](#)

U.S. and Canada

December 3, 2012  
Health Care Without Harm Press Release

**CleanMed Named Emerging Green Conference**

CleanMed 2013 is pleased to announce that it has been chosen as the "Emerging Green Conference" by the Capital Chapter of the Professional Convention Management Association (PCMA). [more](#)

MORE NEWS FROM U.S. AND CANADA

Europe

23 January 2013  
HCWH-Europe Press Release

**The European Parliament calls for better protection of human health from Endocrine Disrupting Chemicals (EDCs)**

Health Care Without Harm Europe welcomes the European Parliament's resolution on the protection of public health from endocrine disrupting chemicals (EDCs) (1), adopted today by the Committee for the Environment, Public Health and Food Safety (ENVI Committee). [more](#)

MORE NEWS FROM EUROPE

Southeast Asia

31 January 2013  
HCWH-Asia Blog

TAKE ACTION

Visit HCWH Global Climate and Health Resource Center, a new resource for the health sector as it moves to address climate change.



Join Us: Cleanmed Europe!



Join the WHO-HCWH Global Initiative to phase-out mercury-based medical devices



# Standardized Environmental Questions for Medical Products



Identify environmentally preferable products – use this questionnaire to inform your decisions.



Members: [Log In Here](#) [Login](#)

## The Latest News

**Governments Agree: Global Mercury Free Health Care by 2020!**



Joshua Karlner  
International Team  
Coordinator Health Care  
Without Harm Last week  
in Geneva, the...

## DEHP-Free Award



Coming soon: Apply for  
the DEHP-Free Award,  
generously made  
possible by Hospira,  
maker of DEHP-free...

## Changemaker Inspiring Change



Seema Wadhwa  
Director, Healthier  
Hospitals Initiative I  
recently had the  
opportunity to...

## Upcoming Events

**Energy Series: Ascension Health - Preferred Energy Consulting Firm Engagement**

March 27 2013 - 2:00 pm - 3:00 pm -- Eastern Standard Time

[DETAILS](#)

**Healthier Hospitals Initiative: Safer Chemical Challenge What's the Problem with Flame Retardants?**

April 03 2013 - 2:00 pm - 3:00 pm -- Eastern Standard Time

[DETAILS](#)

**Energy Series: Commissioning and Retro-Commissioning for Hospital Energy Reductions and Occupant Health**

May 02 2013 - 2:00 pm - 3:00 pm -- Eastern Standard Time

[DETAILS](#)

**SAVE THE DATE**  
Follow us to Boston for CleanMed 2013  
Boston Marriott Copley Pl  
April 23-26, 2013  
The FoodMed Program will be part of CleanMed in 2013

CleanMed2013 YouTube

Latest Video News Release  
October 15, 2012

## Greenhealth SUSTAINABILITY Dashboard

Track and benchmark your most important sustainability metrics in one place.

- Measure
- Track
- Evaluate
- Improve

**DRIVE SUSTAINABILITY**





Search For... Submit

Members: Log In Here Login

Home » Tools & Resources » Sustainability Benchmark Report

## Sustainability Benchmark Report

The 2012 Environmental Excellence Awards Sustainability Benchmark Report, is now available for download by Practice Greenhealth Members.

**Members, log in for access to the complete report.**

Non-members can view the [table of contents and summary of the report.](#)

The 2012 Sustainability Benchmark Report includes activities reported by 171 winners of the Partner for Change(PFC), Partner for Change with Distinction (DIST) and

Environmental Leadership Circle (ELC) Awards won in Practice Greenhealth's 2012 Environmental Excellence Awards Program. This year the data was analyzed by a statistical firm using the SPSS analysis package and is presented by Award type. The data from the 149 hospital winners is reported in the main body of the text, with clinic and long term care data reported in an appendix.

In addition to reporting on metrics, the report shares sustainability trends and areas of interest where winners have saved millions of dollars.

This one of a kind report provides the information needed to benchmark each hospital's practices against the collective progress of leading hospitals and can help identify areas to address to increase green activities.

The report is comprehensive, presenting organized information based on the best practices of the healthcare community in one place to serve as a vital reference guide. We hope that facilities will use this report, as well as the Partner for Change Award Application to not only assess their performance, but as a 'to do' list along the journey towards sustainability.

Practice Greenhealth would like to thank each of the Partner for Change Award Winners who gathered and submitted the data for the lengthy Award application, without whom



### Tools & Resources

- Greenhealth Sustainability Dashboard
- The Practice Greenhealth Sustainability Consultant Program
- Greenhealth Tracker
- Hospital Member Toolkits
- Community Health Center Member Toolkit
- Business Member Toolkits
- Sustainability Benchmark Report
- Energy Impact Calculator
- Greenhealth Magazine
- Supplier Directory
- Practice Greenhealth Mentor Program
- Listserv
- Forums
- Greenhealth Careers

**Join Practice Greenhealth**

Practice Greenhealth is the nation's leading membership and networking organization for institutions in the healthcare community that have made a commitment to sustainable, eco-friendly practices.

[Join Now](#)

**Greenhealth SUSTAINABILITY Dashboard**



# Resources

[Practice Greenhealth](#)

[Green Guide for Health Care](#)

[A Sustainable Health System for All Americans](#)

[Sustainable Healthcare Network UK](#)

[American Hospital Association - Sustainability Roadmap](#)

[Plexus Institute - MRSA](#)

[JCAHO Quality Standard US Hospitals](#)

Thank you!