

The background of the slide is a dark, muted green color. It is decorated with a pattern of lighter green leaf silhouettes of various shapes and sizes, scattered across the surface. The leaves are semi-transparent, allowing the dark background to show through them.

Portland Community College Supply Chain Inventory

October 14, 2013

PCC Sustainability Background

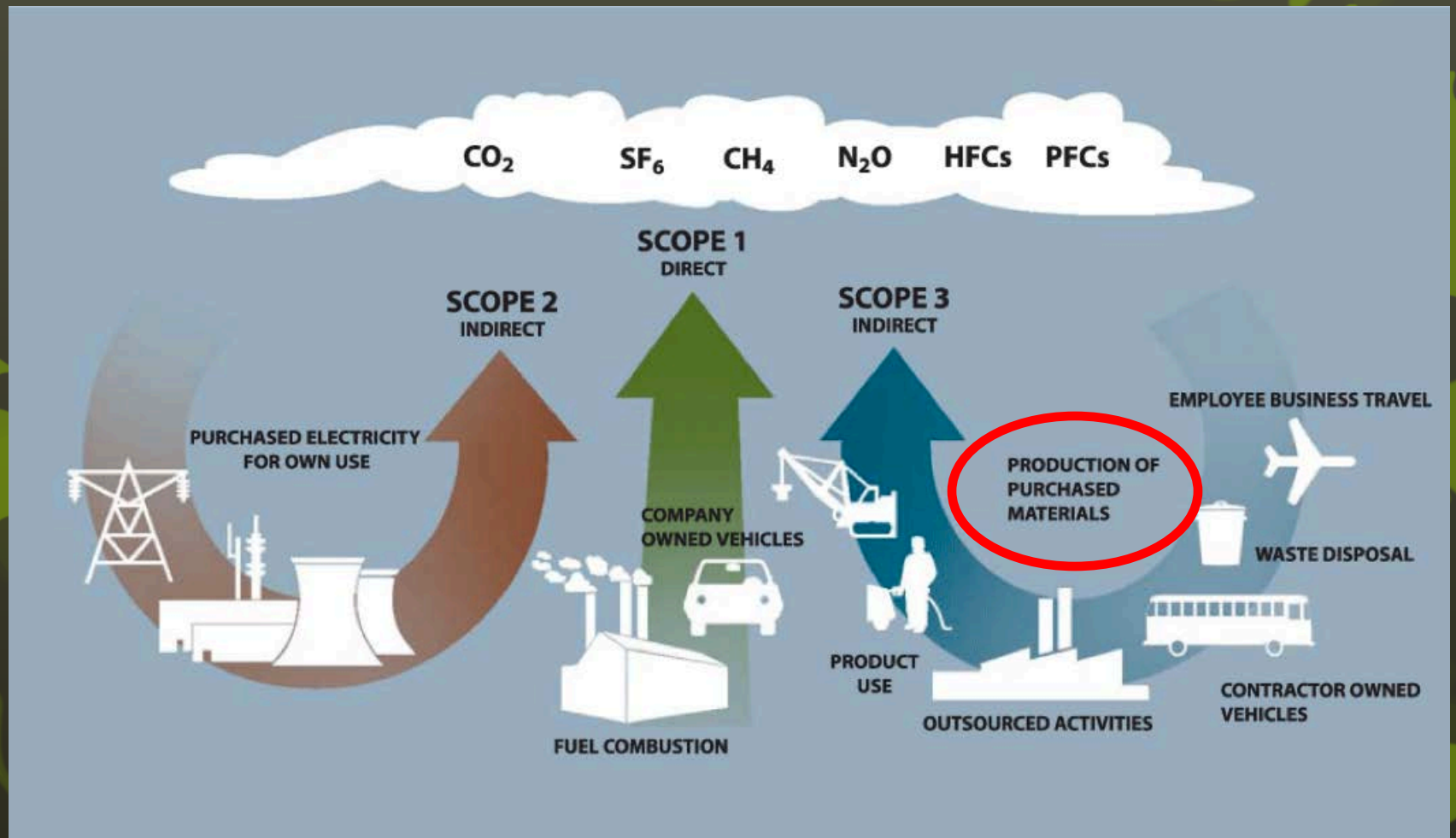
- 2006: Complete first GHG inventory, to establish baseline;
- 2009: President signs Climate Action Plan;
- 2011: Board of Directors approves Sustainable Purchasing Policy;
- 2012: College completes third GHG inventory, comprehensive and retrospective including supply chain emissions;

Sustainable Purchasing Policy

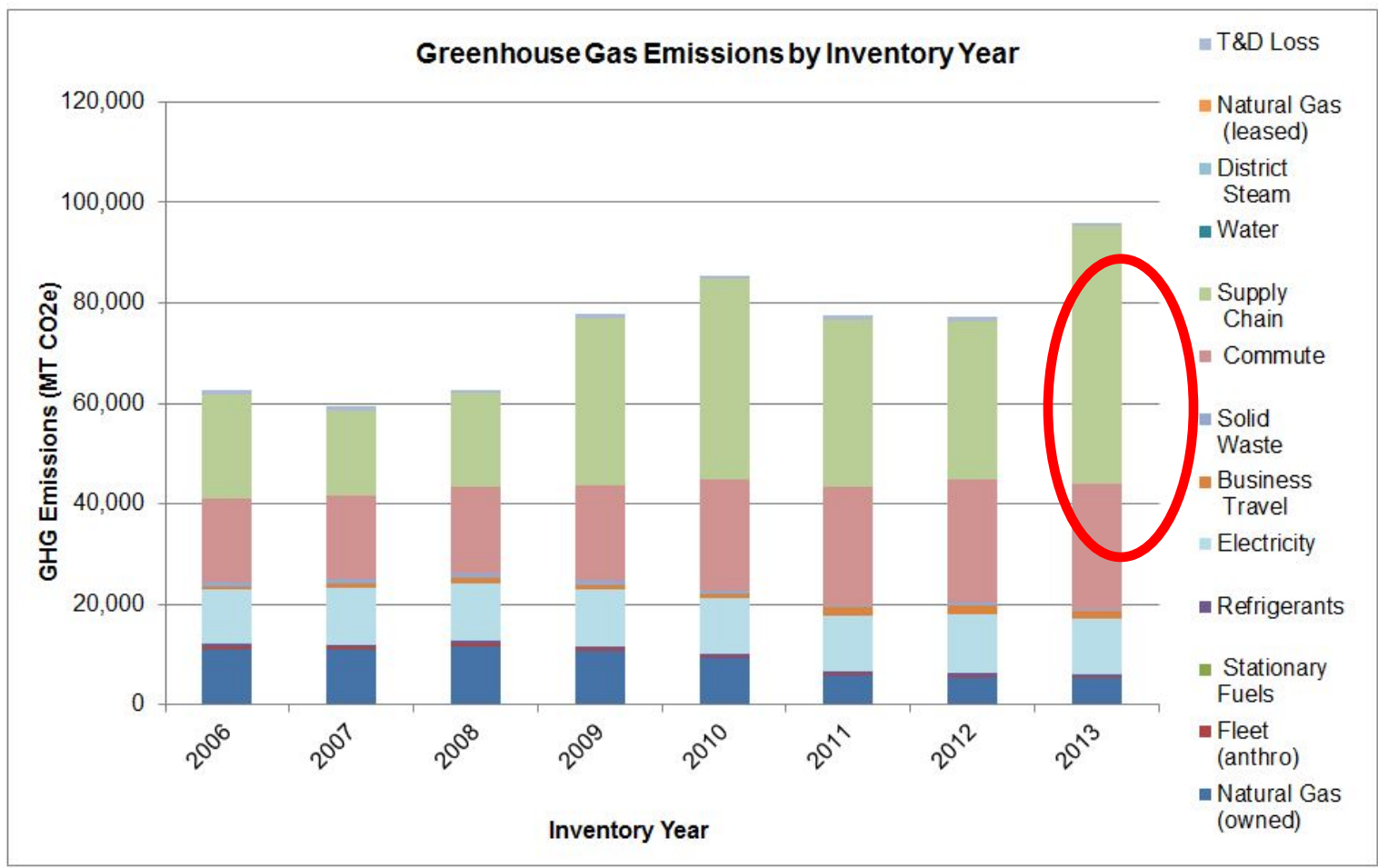
Only July 14, 2011, a sustainability commitment was added to section 100 of the Oregon Community College Rules of Procurement, and was approved by PCC's Board of Directors. It states:

"In accordance with the Oregon Community College Rules of Procurement, member colleges are committed to the use and purchase of environmentally and socially responsible materials and products which are fiscally responsible, reduce resource consumption and waste, perform adequately and promote human health and well-being."

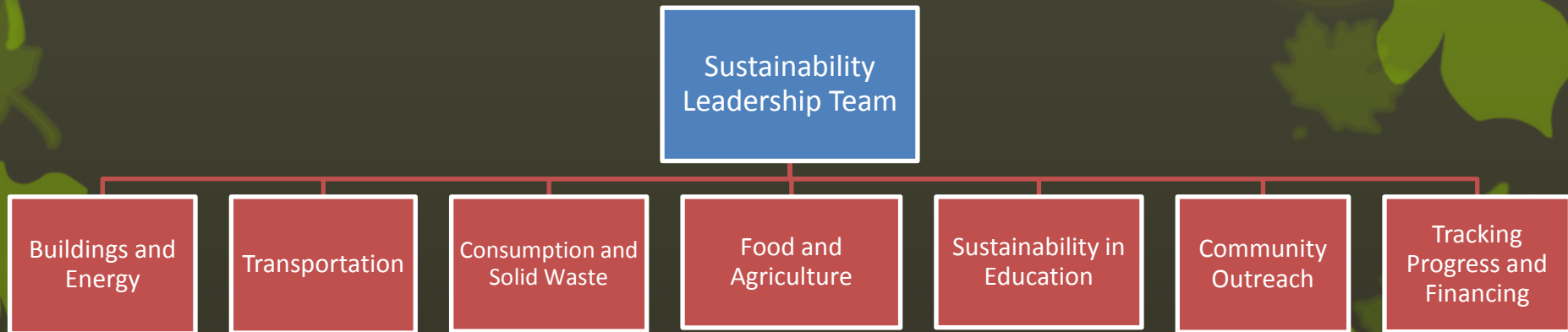
Supply Chain Emissions



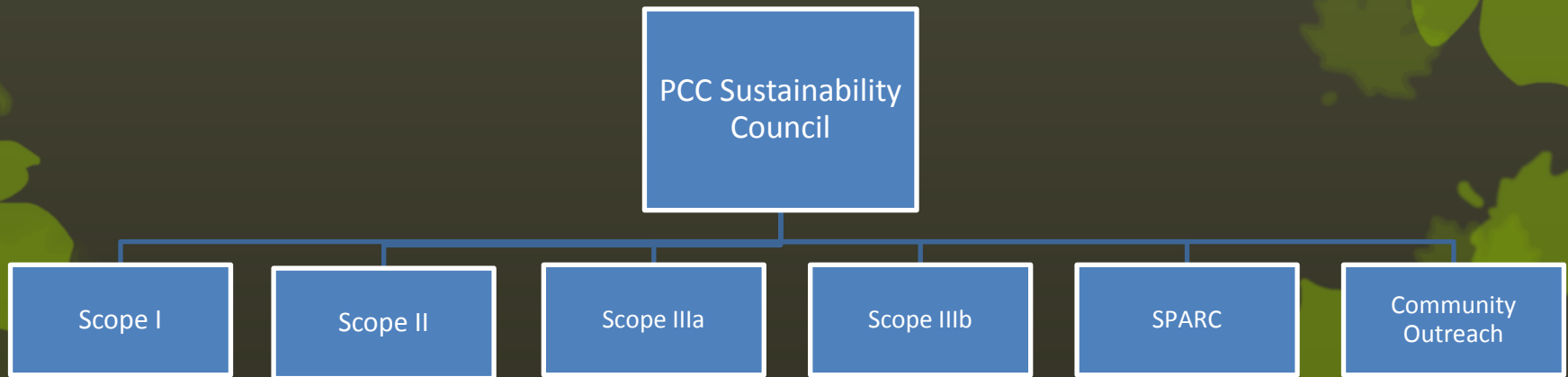
Supply Chain Emissions



Sustainability Organization- Before



Sustainability Organization- After



Lessons Learned

- Start early!
- Set a baseline year and move forward
- Define boundaries (district-wide vs. campus)
- Effectively communicate shared goals

Lessons Learned

- Importance of transparency
- Beware of diminishing returns
- Importance of outreach
- What's next?

Next Steps

- Sustainable Purchasing Leadership Council
- More specific supply chain GHG inventory
- How to account for sustainable purchases in GHG inventory?
- Sustainability in RFPs

Questions/Thank You

● Erin Stanforth, Sustainability Manager

erin.stanforth@pcc.edu

971-722-8581