



Photo Credit/Credit photographique: Dan Crosbie



# Superstorm Sandy, The Elections & Sustainability



# ExxonMobil CEO Rex Tillerson:

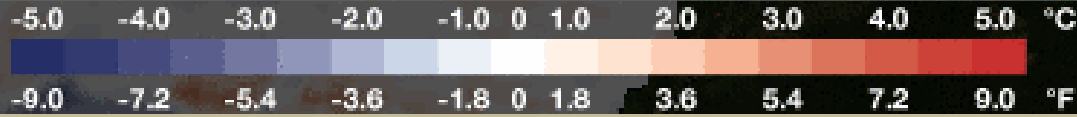
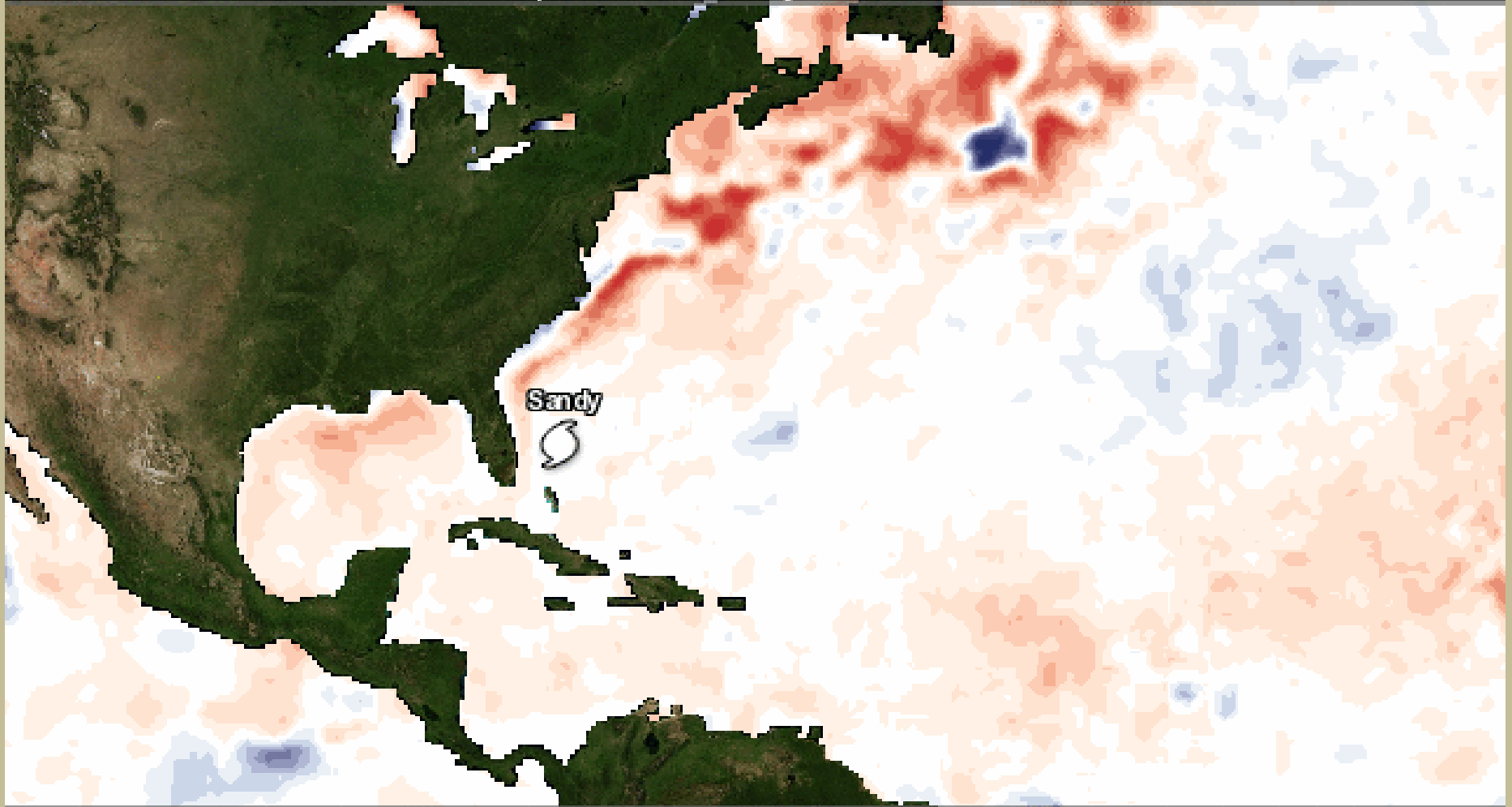
June 2012

“We have spent our entire existence adapting, OK? So we will adapt to this. Changes to weather patterns that move crop production areas around — we’ll adapt to that. It’s an engineering problem, and it has engineering solutions. And so I don’t — the fear factor that people want to throw out there to say we just have to stop this, I do not accept.”

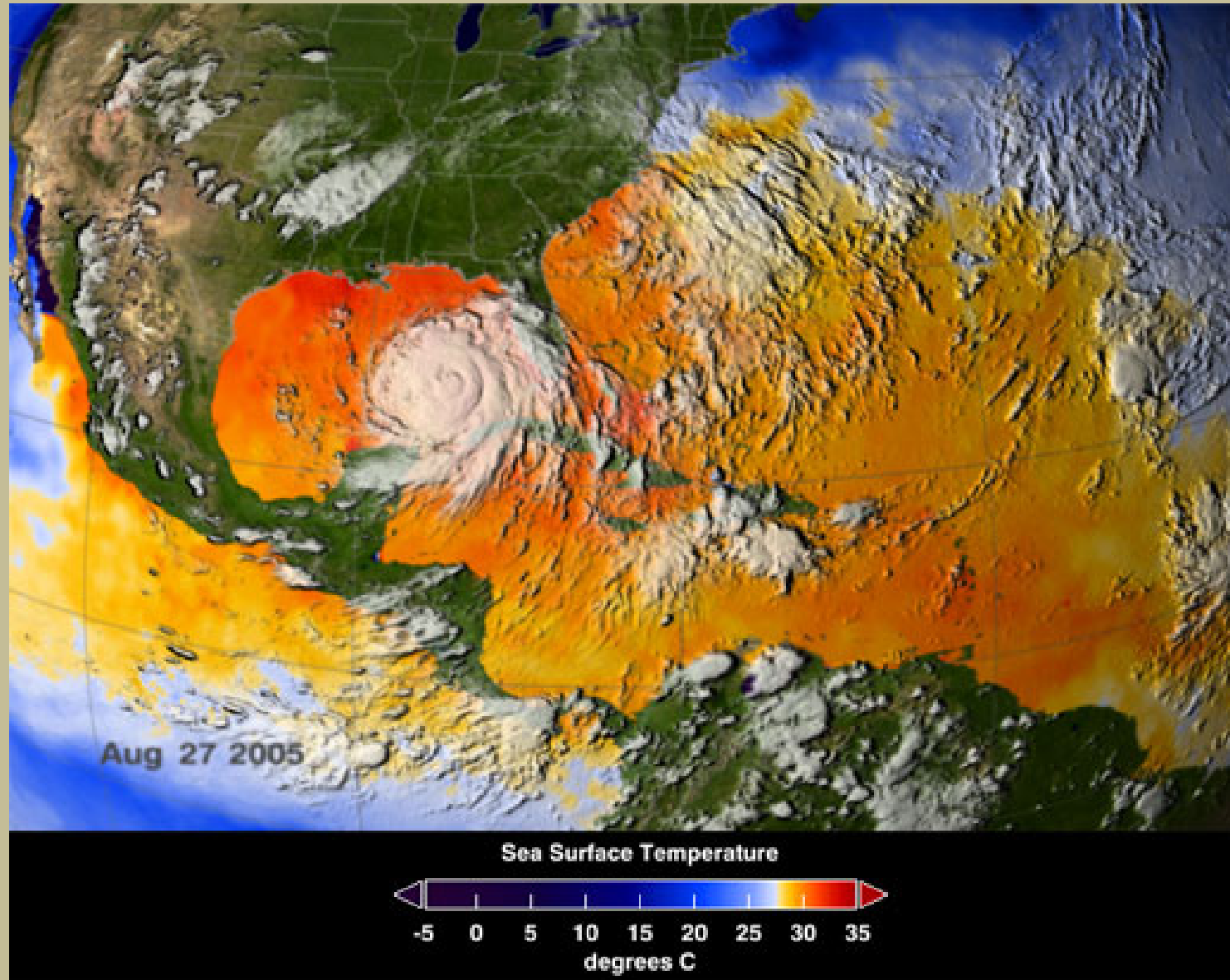


# Northern Atlantic Sea Surface Temperature Anomaly

Generated Fri Oct 26 16:40 EDT 2012



# Sea Surface Temperature During Hurricane Katrina

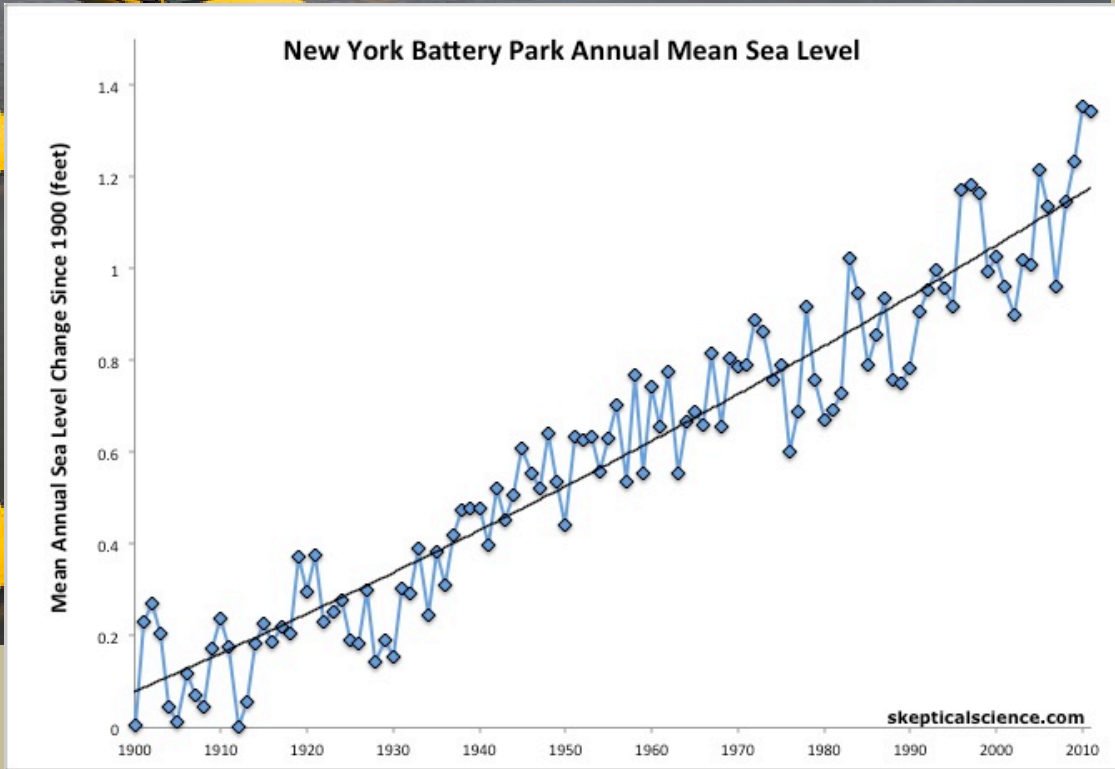


**Warmer air can  
hold  
a lot more water vapor**

**With each additional 1° (C) of temperature, the atmosphere's capacity to hold water vapor increases by 7%**

**There is already 4% more water  
vapor over the oceans than there  
was only 30 years ago**

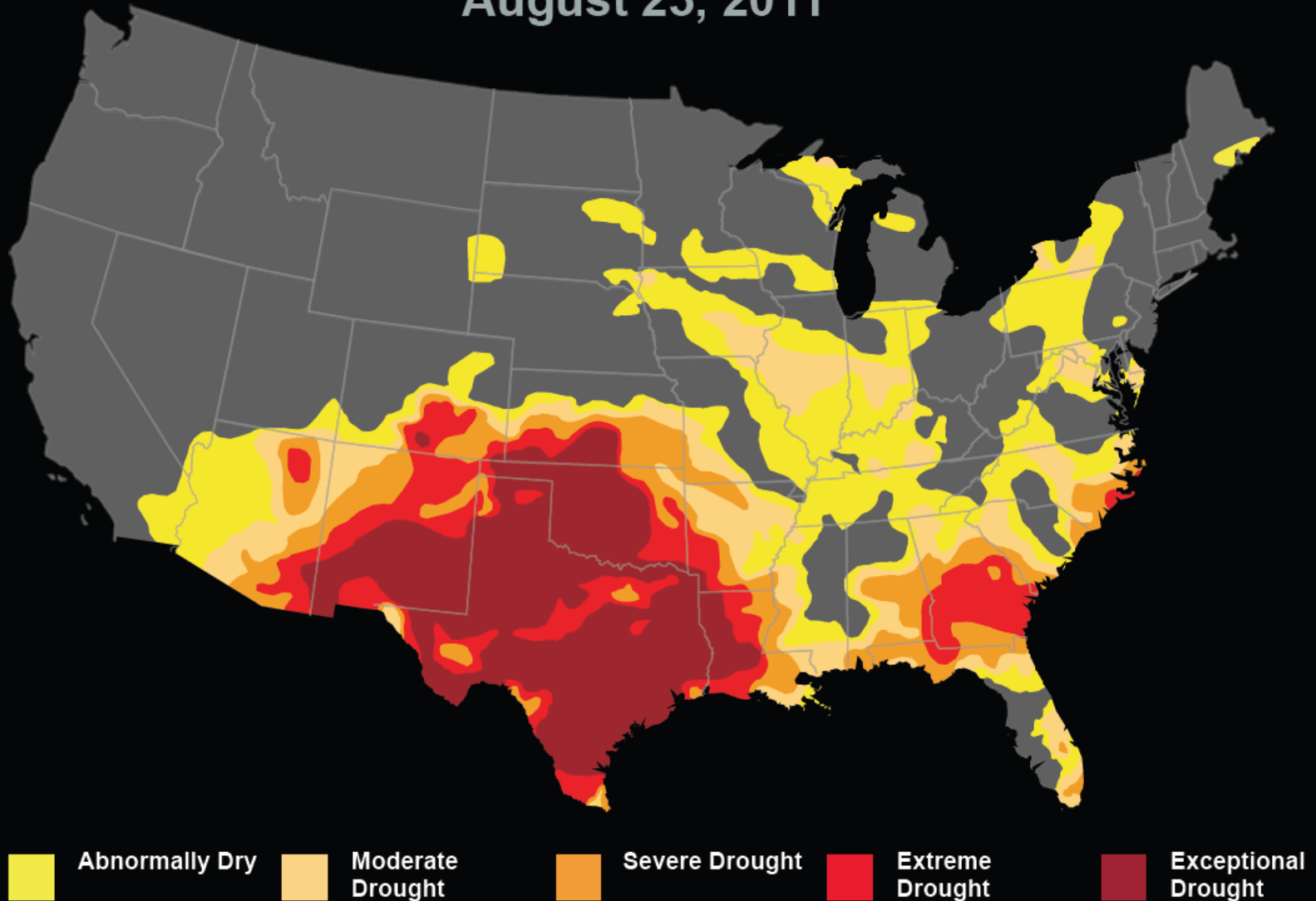






# U.S. Drought Conditions

August 23, 2011





this is the size of  
**ONE TONNE CO<sub>2</sub>**

Take up the challenge  
reduce every way YOU can  
Now!

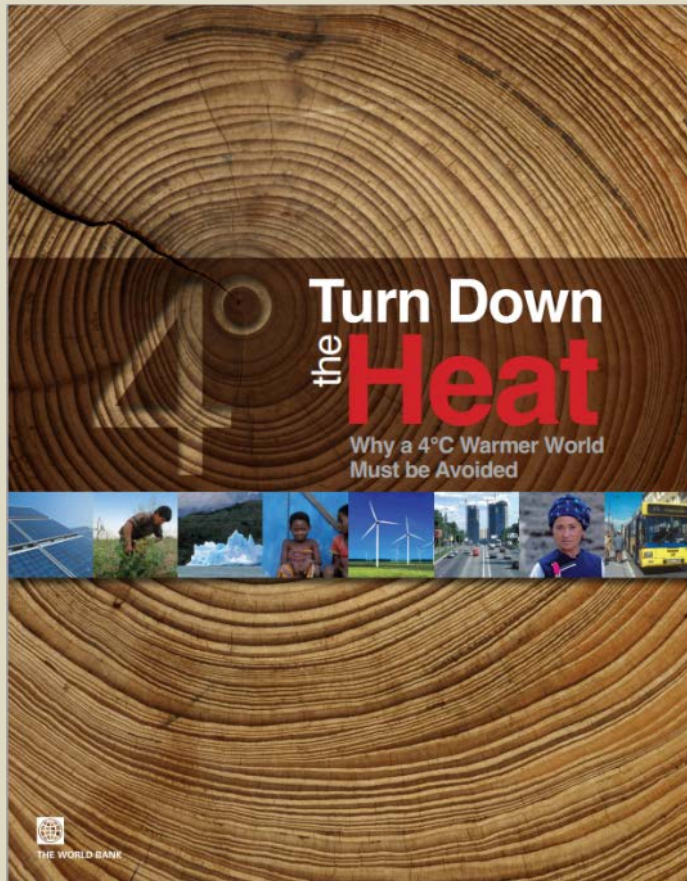


# 1,000,000,000,000 Tons of CO<sub>2</sub> from Oil, Coal & Gas Already Dumped in Our Atmosphere



# World Bank:

“A 4°C world can, and must, be avoided.”



- Inundation of coastal cities
- Increasing risks for food production
- Substantially exacerbated water scarcity in many regions
- Increased frequency of high-intensity tropical cyclones
- Irreversible loss of biodiversity, including coral reef systems
- High uncertainty and new risks

# PriceWaterhouseCoopers:

## “We have Passed a Critical Threshold”

- the “global economy now needs to cut carbon intensity by 5.1% every year from now to 2050 to achieve this carbon budget... Keeping to the 2°C carbon budget will require unprecedented and sustained reductions over four decades.”









# NWF Student Guide on Dirty Energy Politics

[www.campusecology.org/  
dirtyenergypolitics](http://www.campusecology.org/dirtyenergypolitics)

**A Student's Guide to How Corporate Oil, Gas and Coal Money Influences U.S. Energy Policy**

by Courtney Cochran, Kevin Coyle and Lisa Madry  
Foreword by Larry Schweiger



  
National Wildlife Federation®  
**CAMPUS**  
ecology®

This guide takes the reader behind the curtains of American politics and policy development to shed light on the handful of fossil fuel-based companies that are pouring money into Congress and the media in an attempt to undermine America's ability to confront the climate change crisis.

**A NATIONAL WILDLIFE FEDERATION REPORT**



The New York Times

September 13, 2012

## **Fossil Fuel Industry Ads Dominate TV Campaign**

**As of September, \$158  
Million in Ads Attacking  
Clean Energy and Clean  
Energy Supporters**

I DO ~~NOT~~ BELIEVE IN  
GLOBAL WARMING

I DO ~~NOT~~ BELIEVE IN  
GLOBAL WARMING

**Bloomberg  
Businessweek**

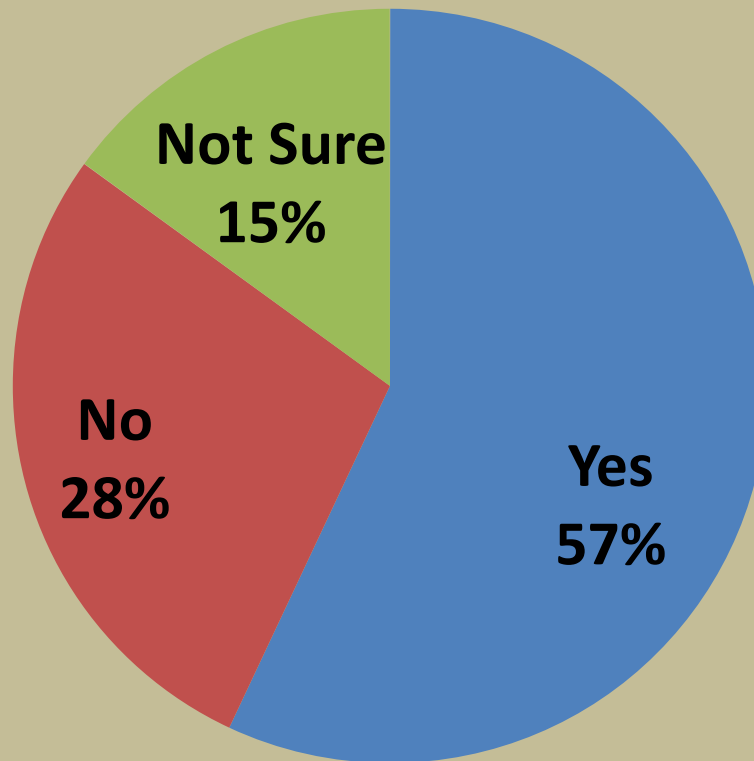
November 5 – November 11, 2012 | [businessweek.com](http://businessweek.com)

# IT'S GLOBAL WARMING, STUPID

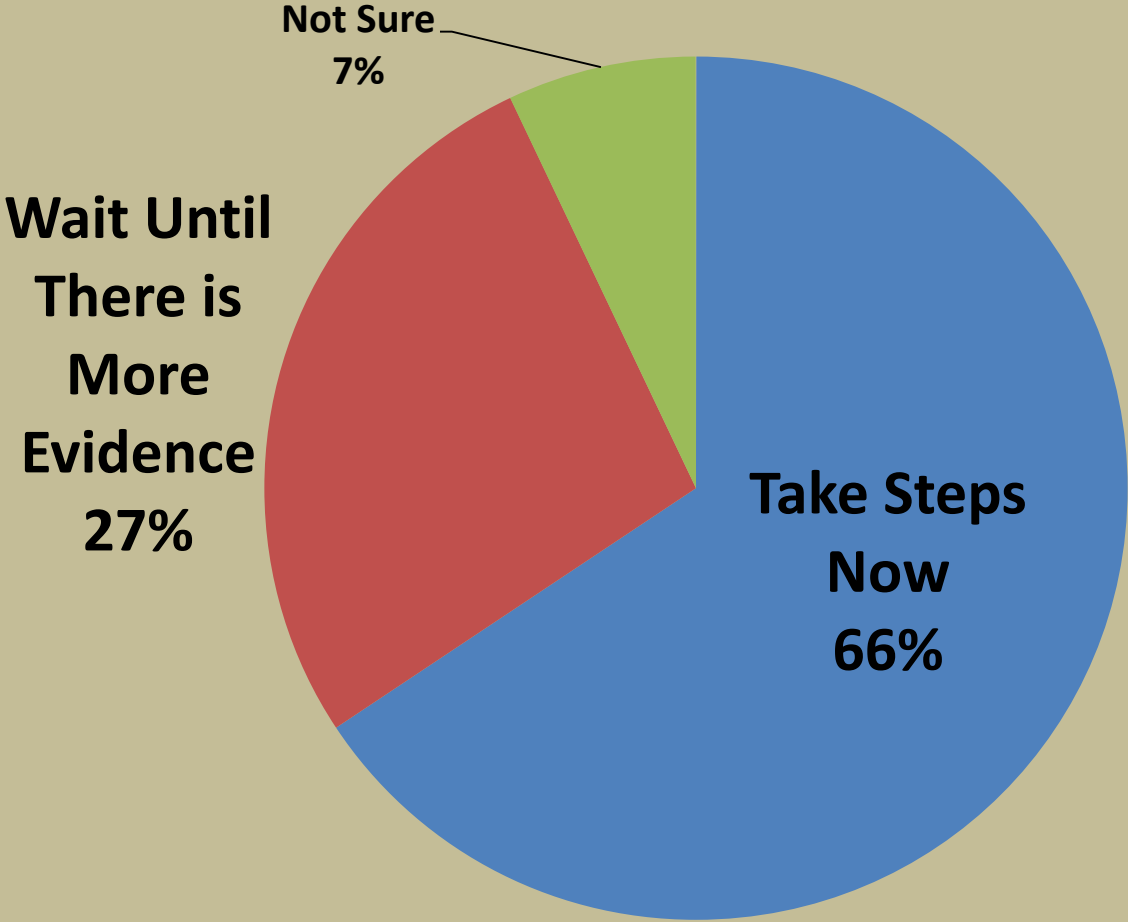


# Zogby Voter Poll (2012 Elections)

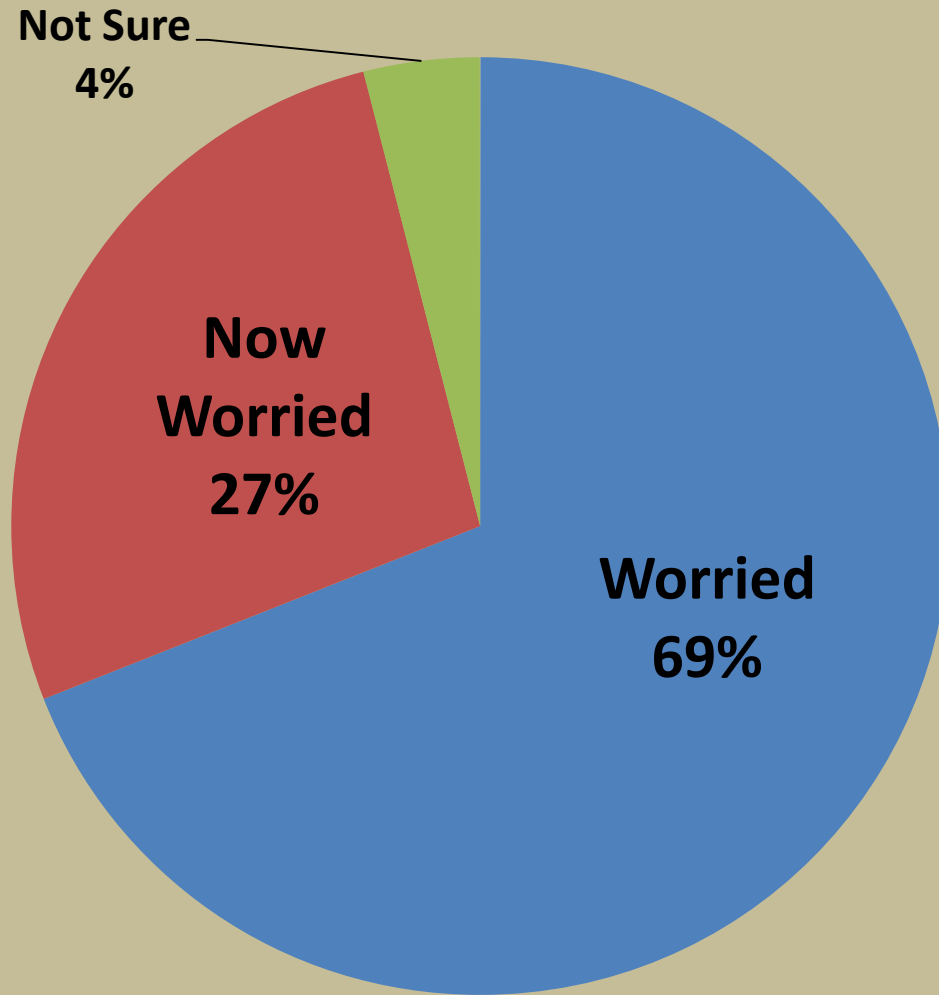
Do you think climate change is adding to the severity of recent extreme weather such as Superstorm Sandy and the summer droughts?

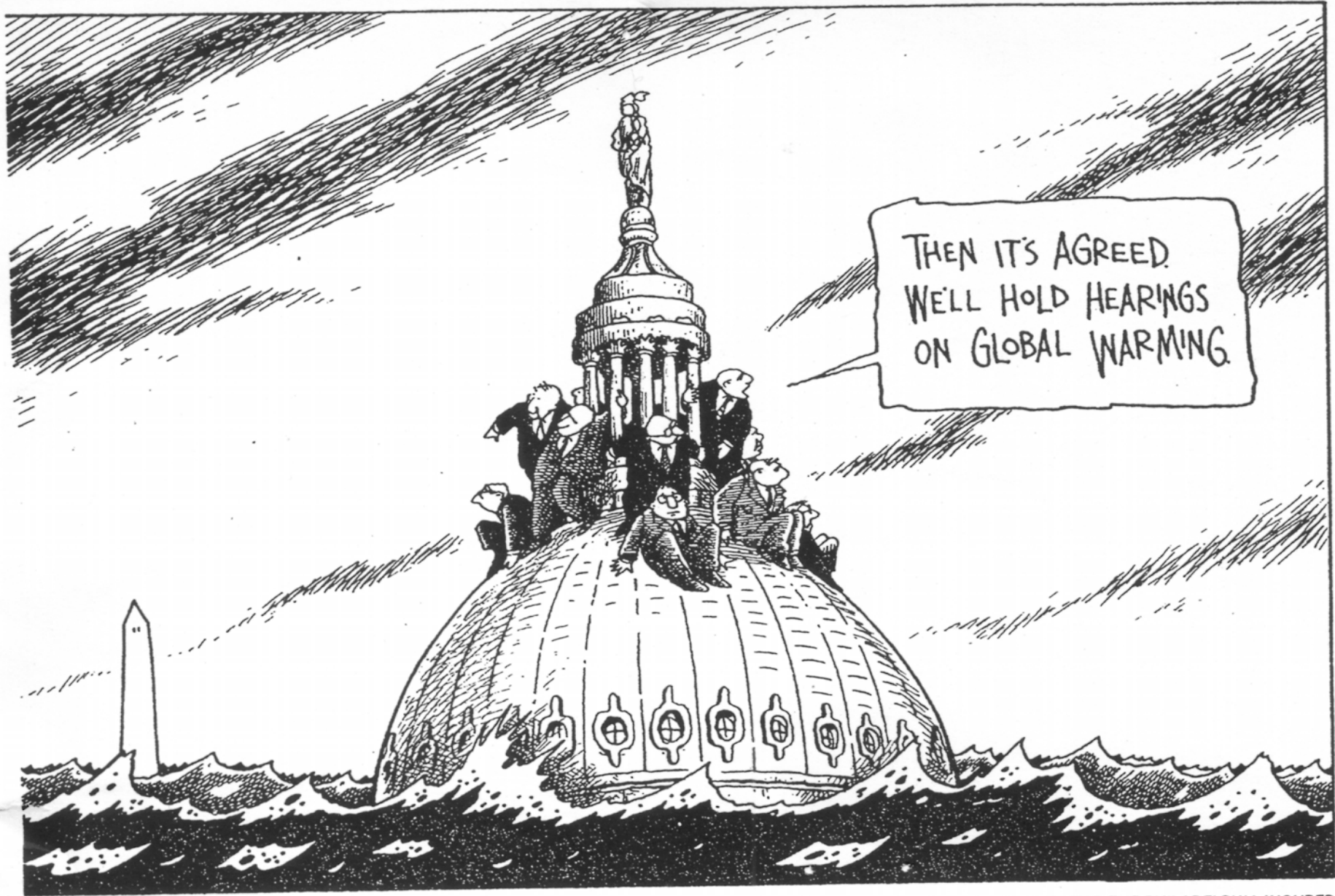


**Do you believe elected officials should take steps now to reduce the impact of climate change on future generations, or wait until there is more evidence?**



# Are you worried about the growing cost and risks of extreme weather disasters fueled by climate change?





THEN IT'S AGREED.  
WE'LL HOLD HEARINGS  
ON GLOBAL WARMING.

BY AUTH FOR THE PHILADELPHIA INQUIRER











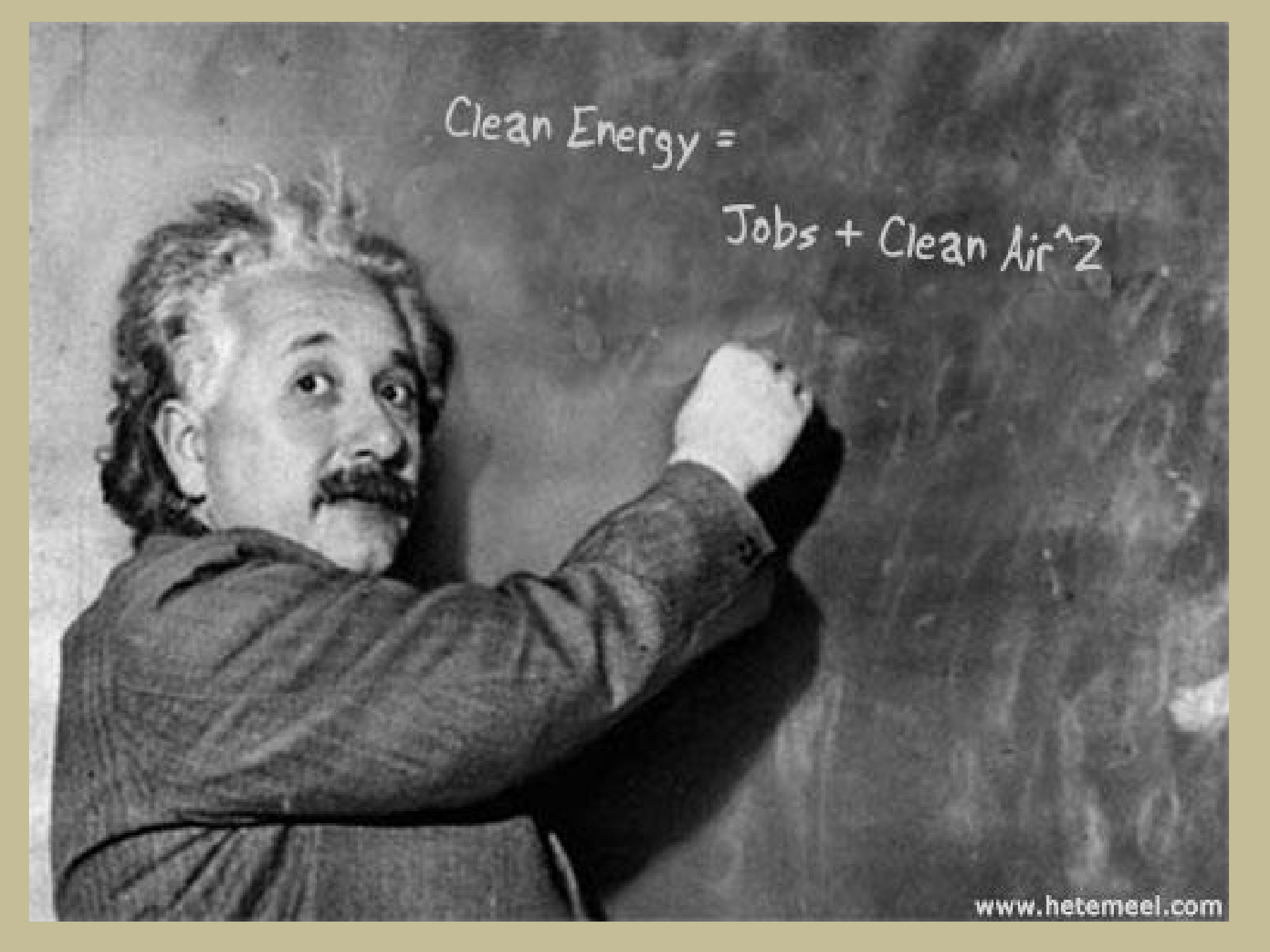
# CARBON BOMB?





**IF YOU CAN READ THIS  
YOU ARE BREATHING  
COAL POLLUTION**



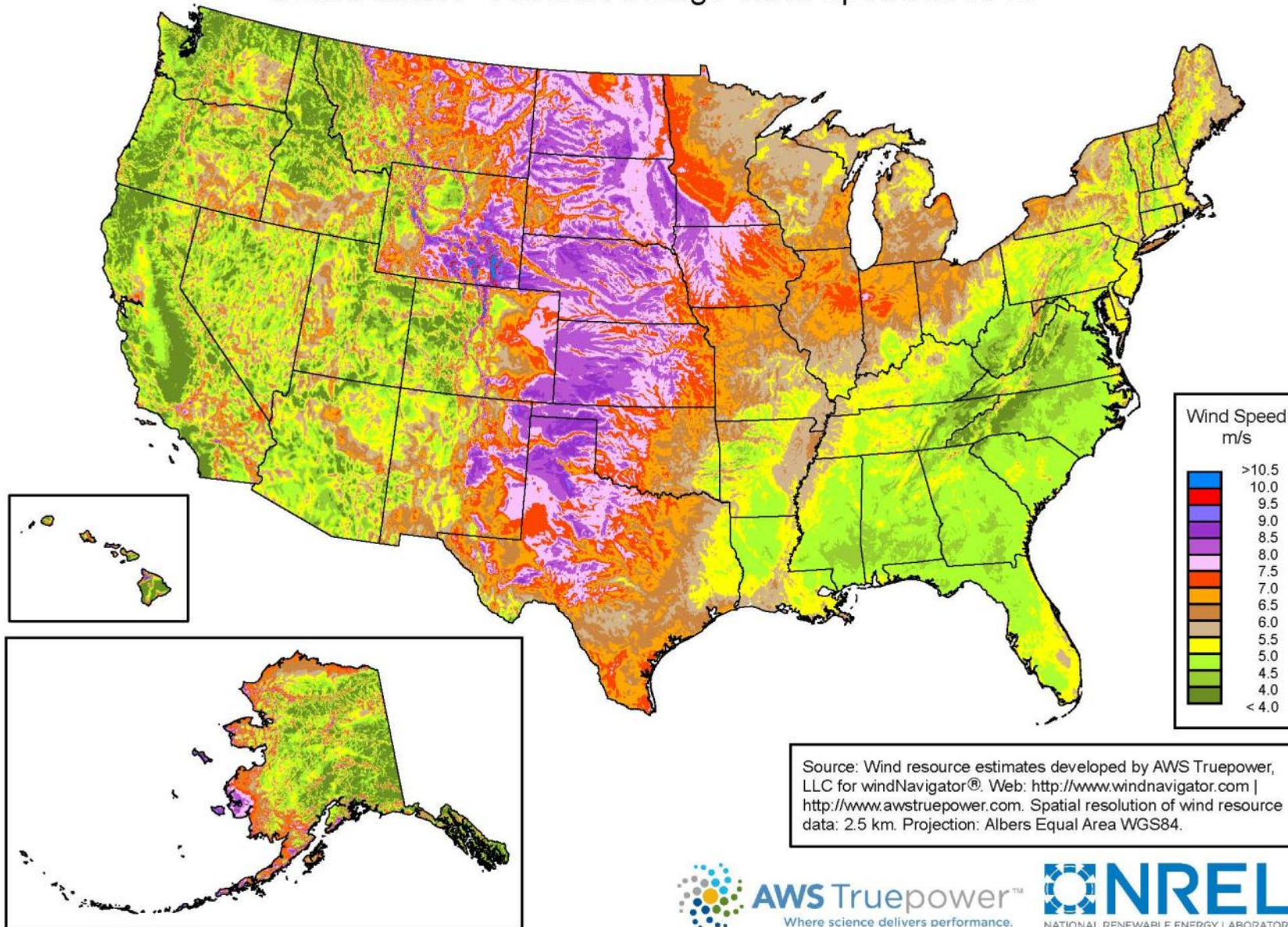


Clean Energy =

Jobs + Clean Air<sup>2</sup>



# United States - Annual Average Wind Speed at 80 m



Source: Wind resource estimates developed by AWS Truepower, LLC for windNavigator®. Web: <http://www.windnavigator.com> | <http://www.awstruepower.com>. Spatial resolution of wind resource data: 2.5 km. Projection: Albers Equal Area WGS84.

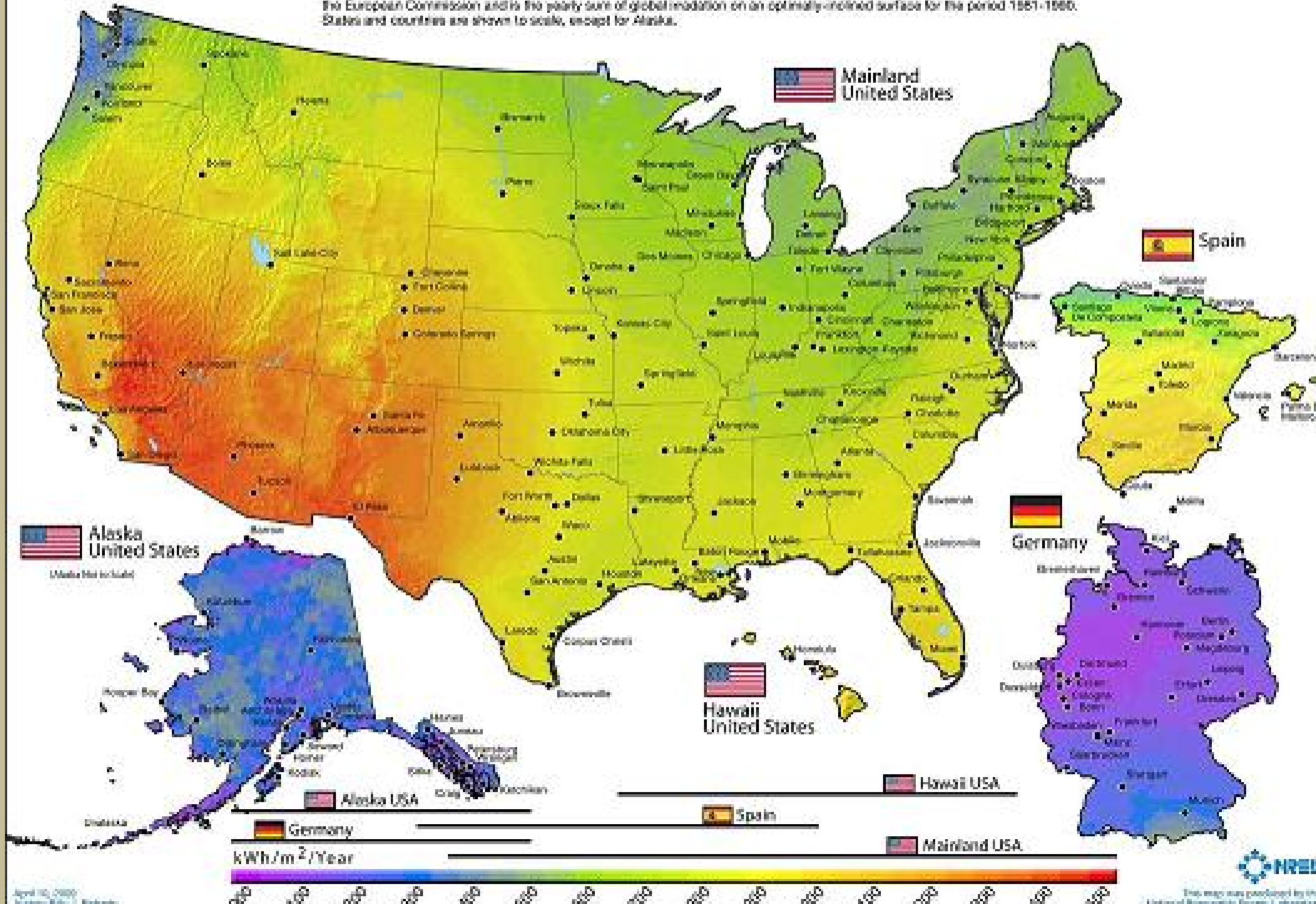


**AWS Truepower™**  
Where science delivers performance.



# Photovoltaic Solar Resource: United States - Spain - Germany

Annual average solar resource data are for a solar collector oriented toward the south at a tilt = local latitude. The data for Hawaii and the 48 contiguous states are derived from a model developed at SUNY/Buffalo using geostationary weather satellite data for the period 1998-2005. The data for Alaska are derived from a 40-yr satellite and surface cloud cover database for the period 1965-1991 (NREL, 2003). The data for Germany and Spain were acquired from the Joint Research Centre of the European Commission and is the yearly sum of global irradiation on an optimally-inclined surface for the period 1981-1986. States and countries are shown to scale, except for Alaska.





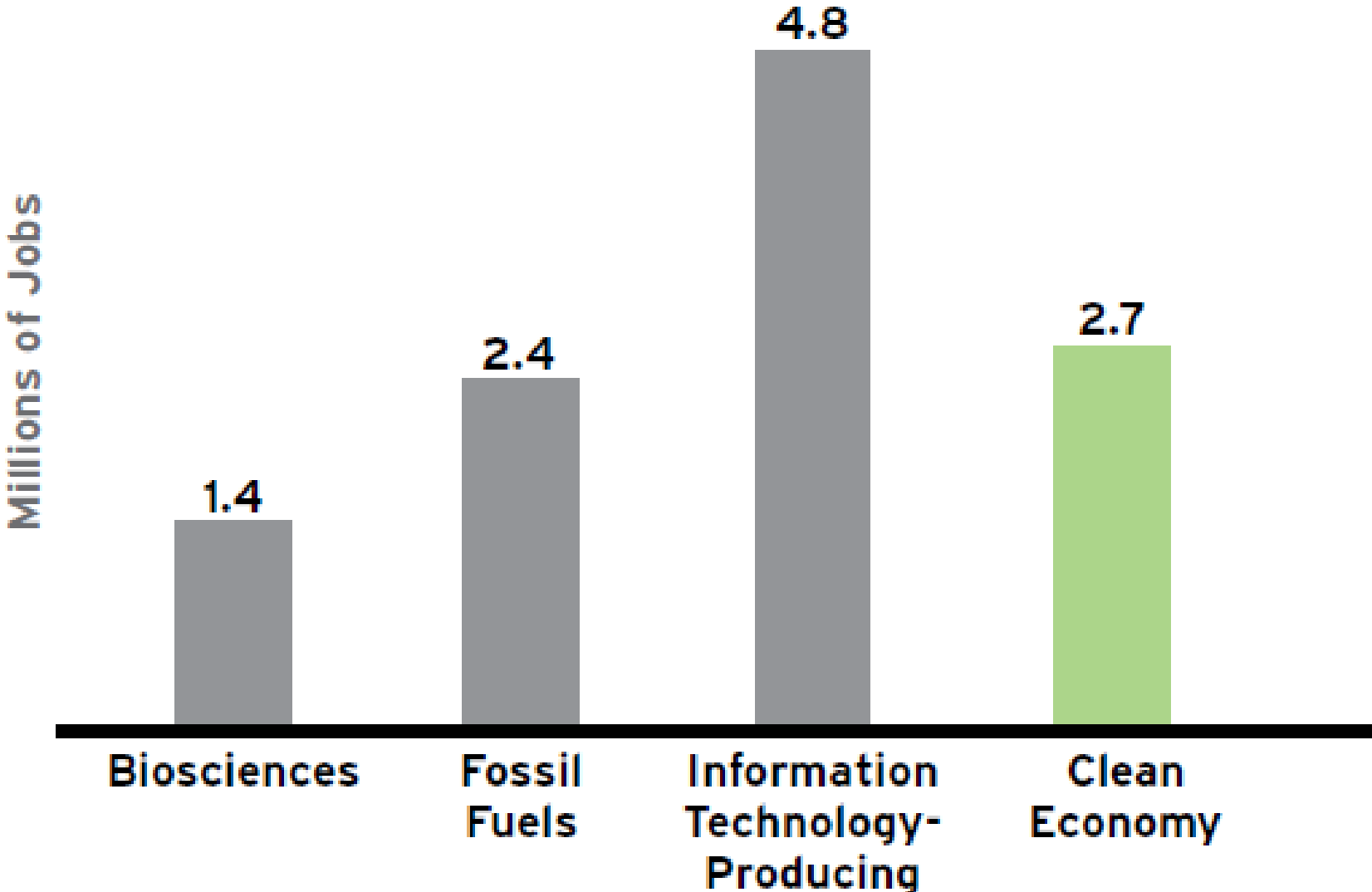
---

REPLACE ONE INCANDESCENT LIGHTBULB  
WITH A COMPACT FLUORESCENT LAMP AND YOU  
WILL SAVE THIS 500 POUND PILE OF COAL.

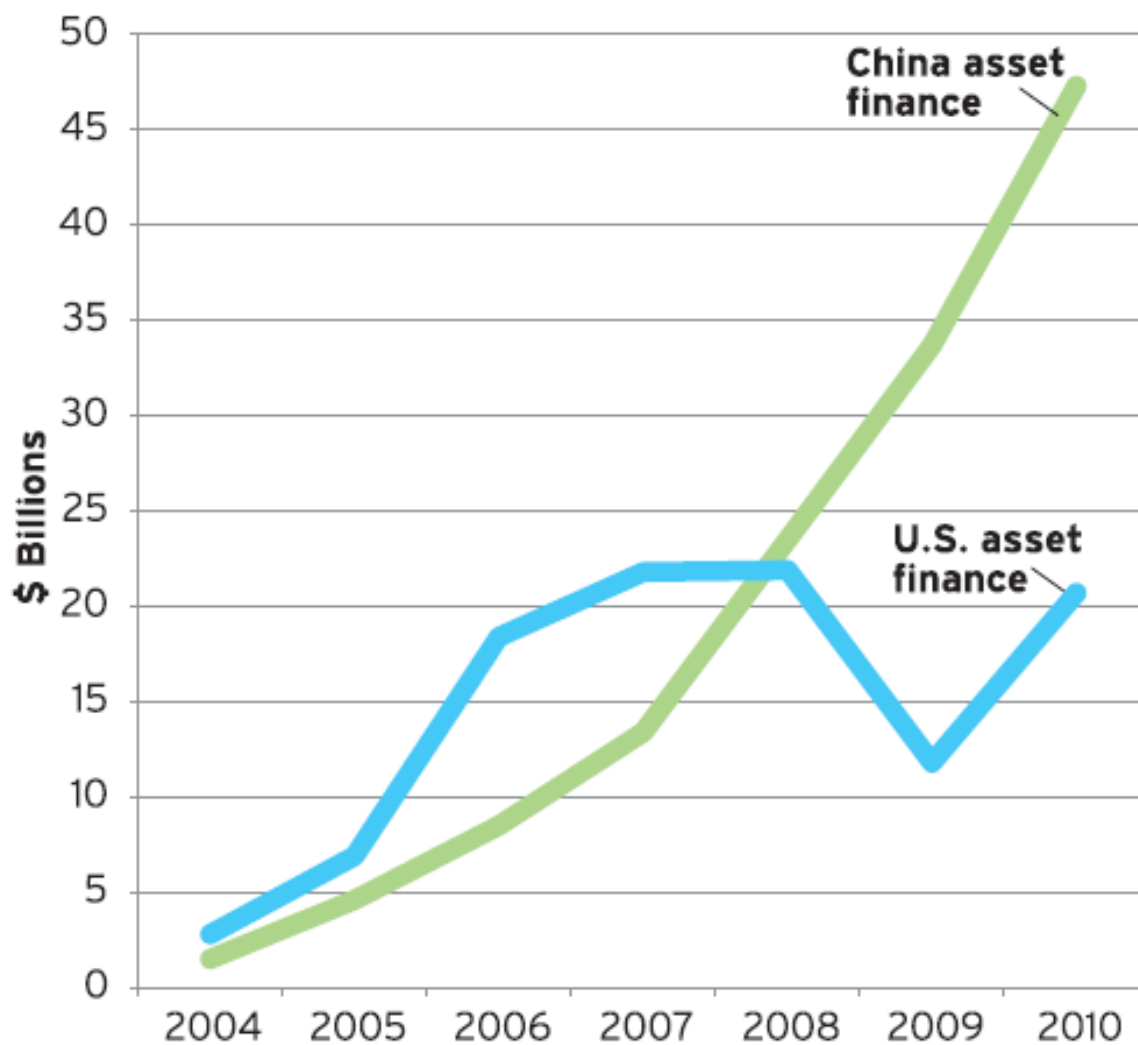
---

© National Geographic  
Magazine

**Figure 1. The Clean Economy Compared with Other Sectors of the U.S. Economy**



# Figure 1. U.S. and China Clean Energy Asset Finance



Source: Bloomberg New Energy Finance

# Portage Glacier, Alaska



1914



2004

# Get Involved!

- Challenge elected officials and candidates at every level and from both parties to commit not to take campaign contributions from fossil fuel companies.
- Fight dirty energy projects in your backyard.
- Support the Environmental Protection Agency's pollution standards
- Take action on your campus or in your community to showcase sustainability and lead the way.



Twitter: @jeremysymons

[www.campusecology.org/dirtyenergypolitics](http://www.campusecology.org/dirtyenergypolitics)

[www.facebook.com/CampusEcology](http://www.facebook.com/CampusEcology)

@CampusEcology

