

Technical Documentation on Publishing Web Pages using Microsoft FrontPage

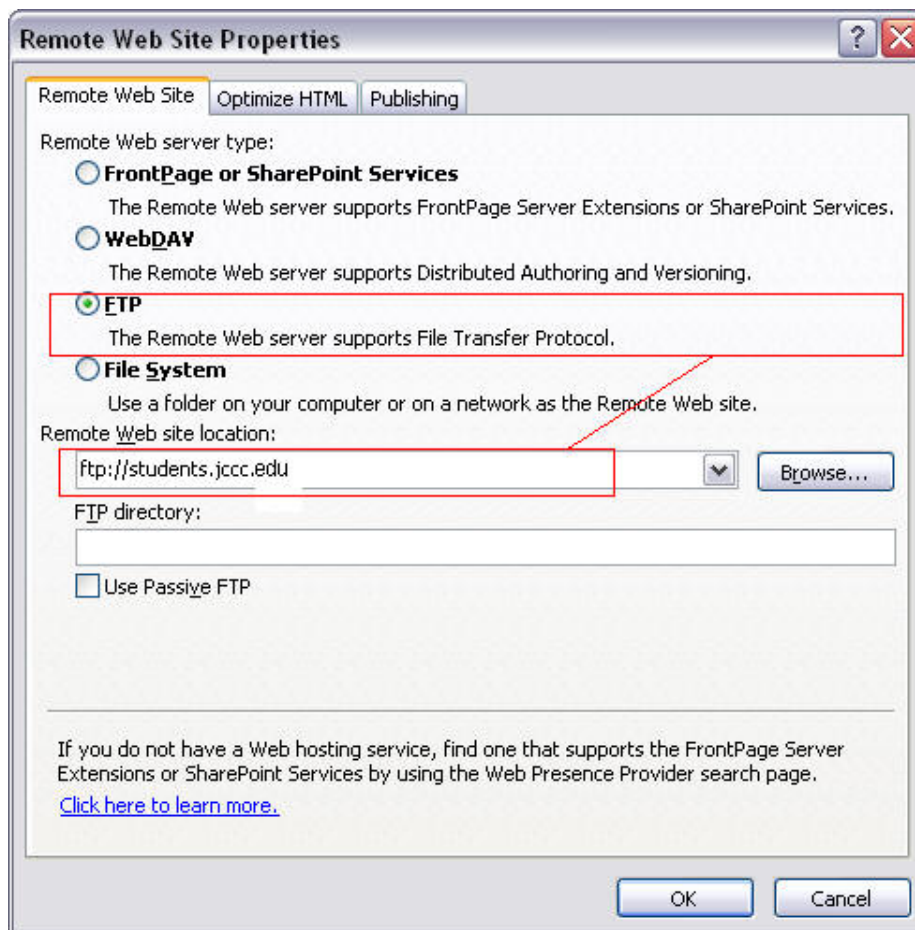
Students at JCCC can publish their web pages to their drive space on the student server. The student server supports the use of the PHP scripting language. The student server does not support the use of CGI scripts or FrontPage extensions.

You can use any HTML authoring program to create your web pages. The documentation below will show examples using Microsoft FrontPage.

If you already have a published site and want to view it got to:
http://students.jccc.net/your_user_id/ (The tilde is not longer required)

Publishing web page using Microsoft FrontPage:

1. When you are ready for you pages to be published to the web, click the "File" option in the menu bar, and then click "Publish Web" from the drop-down menu. A "Publish Web" window will appear.



2. In the "Specify the location to publish your web to:" text box, enter the following:
<ftp://students.jccc.net/>

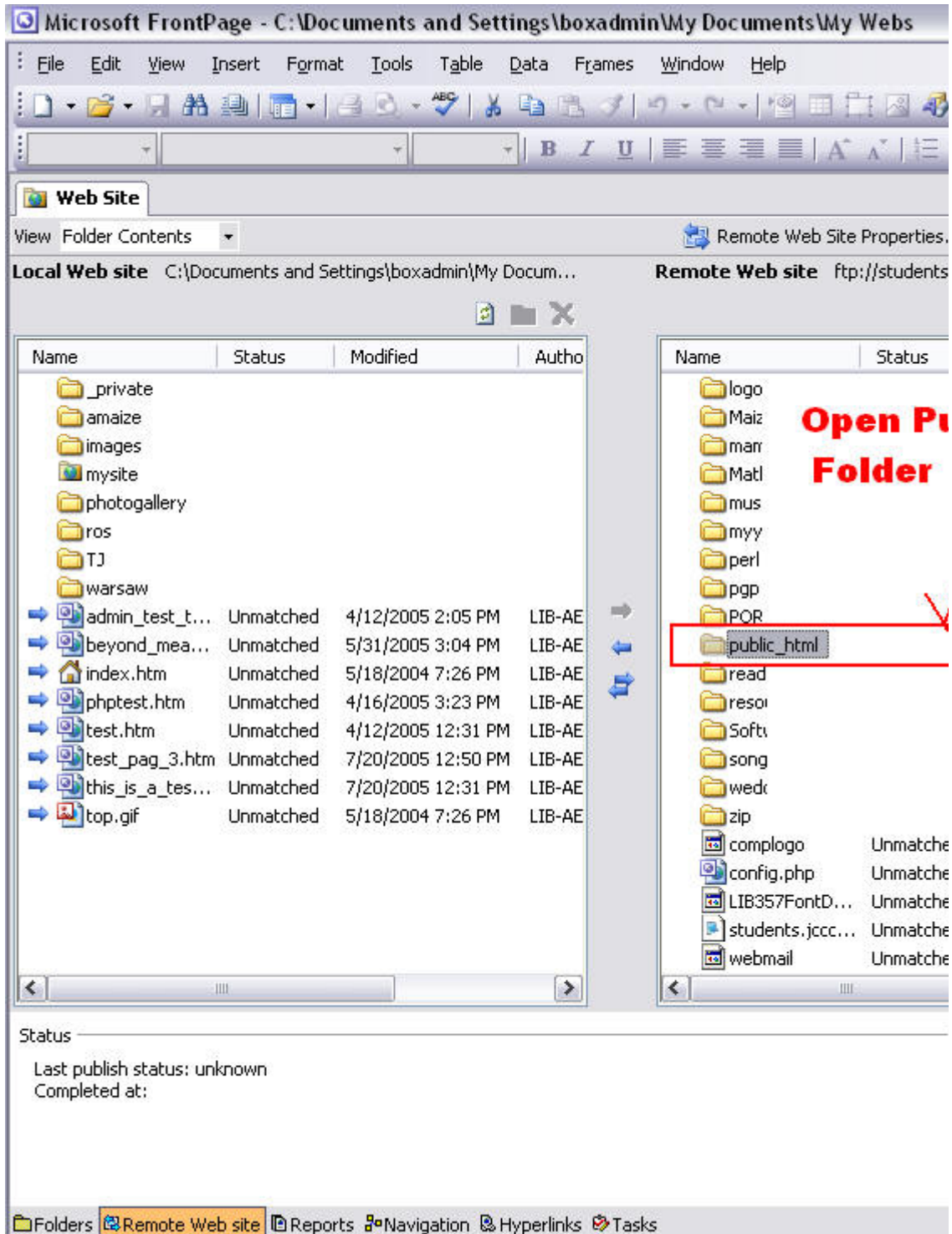
Click "OK" and a new window will appear.

Your user id is your Campus Pipeline email id. You should see a window similar to the following:

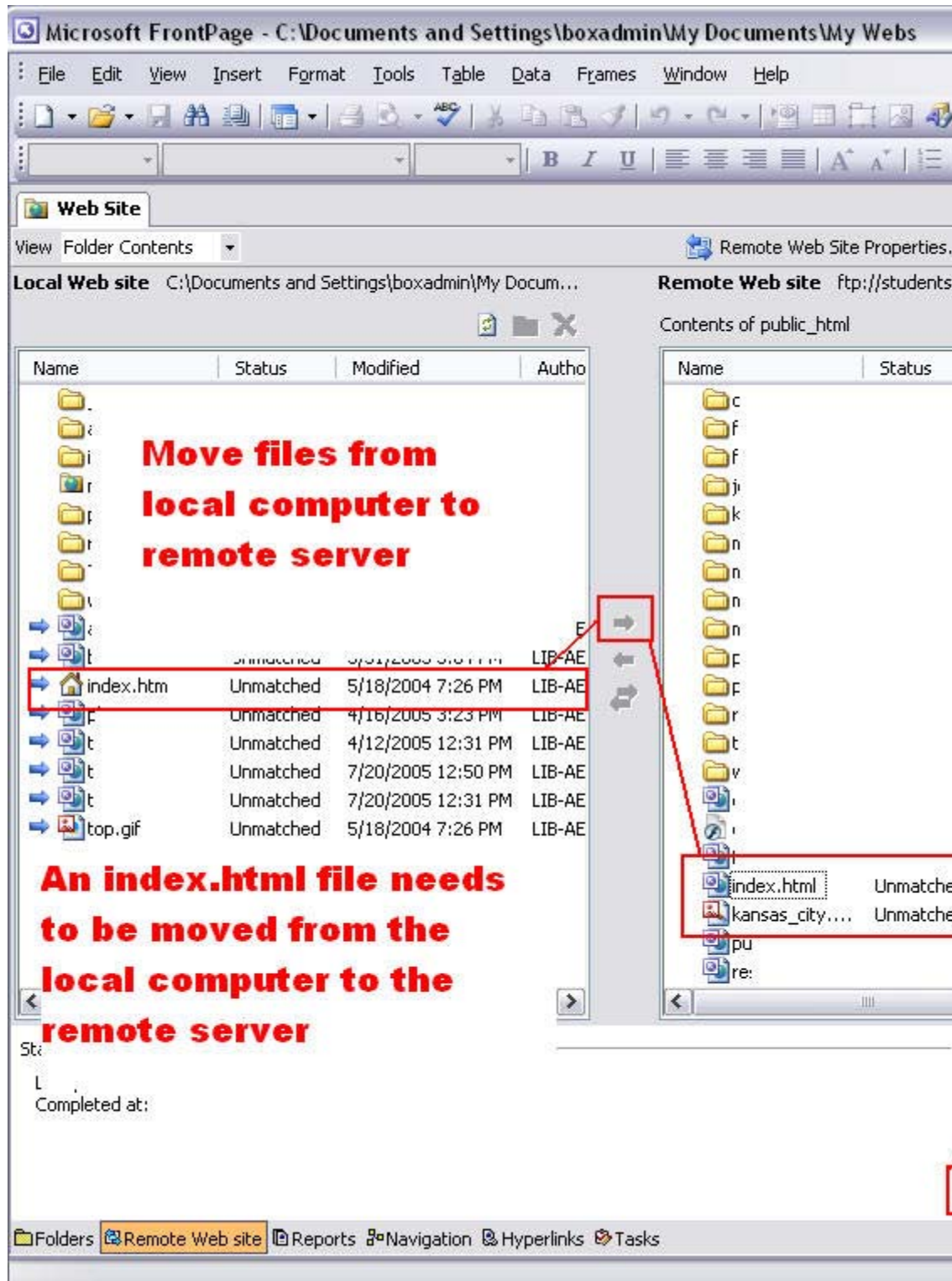


On the remote server open the **public_html** directory. This is the folder where your content needs to be published.

***NOTE: Please make sure you are publishing to the PUBLIC_HTML FOLDER on the remote students.jccc.net server**



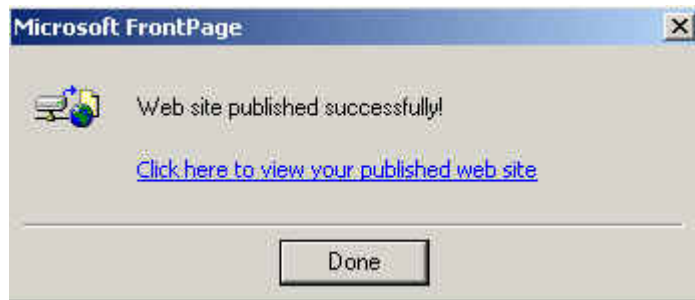
Move files from local computer to remote server in the public_html folder



3. Click the "Publish" button.

Click "OK". A new window will appear showing the status of the web page publishing process.

4. When the web page publishing is complete, a new window will appear stating that your web site has been published successfully.



* Note: Do not click the "Click here to view your published web site" link from this window. Since we used the "ftp" protocol, and not the "http" protocol, your site will not appear. Just open a web browser and type in the following to view your published web site:
http://students.jcc.net/your_user_id/.
