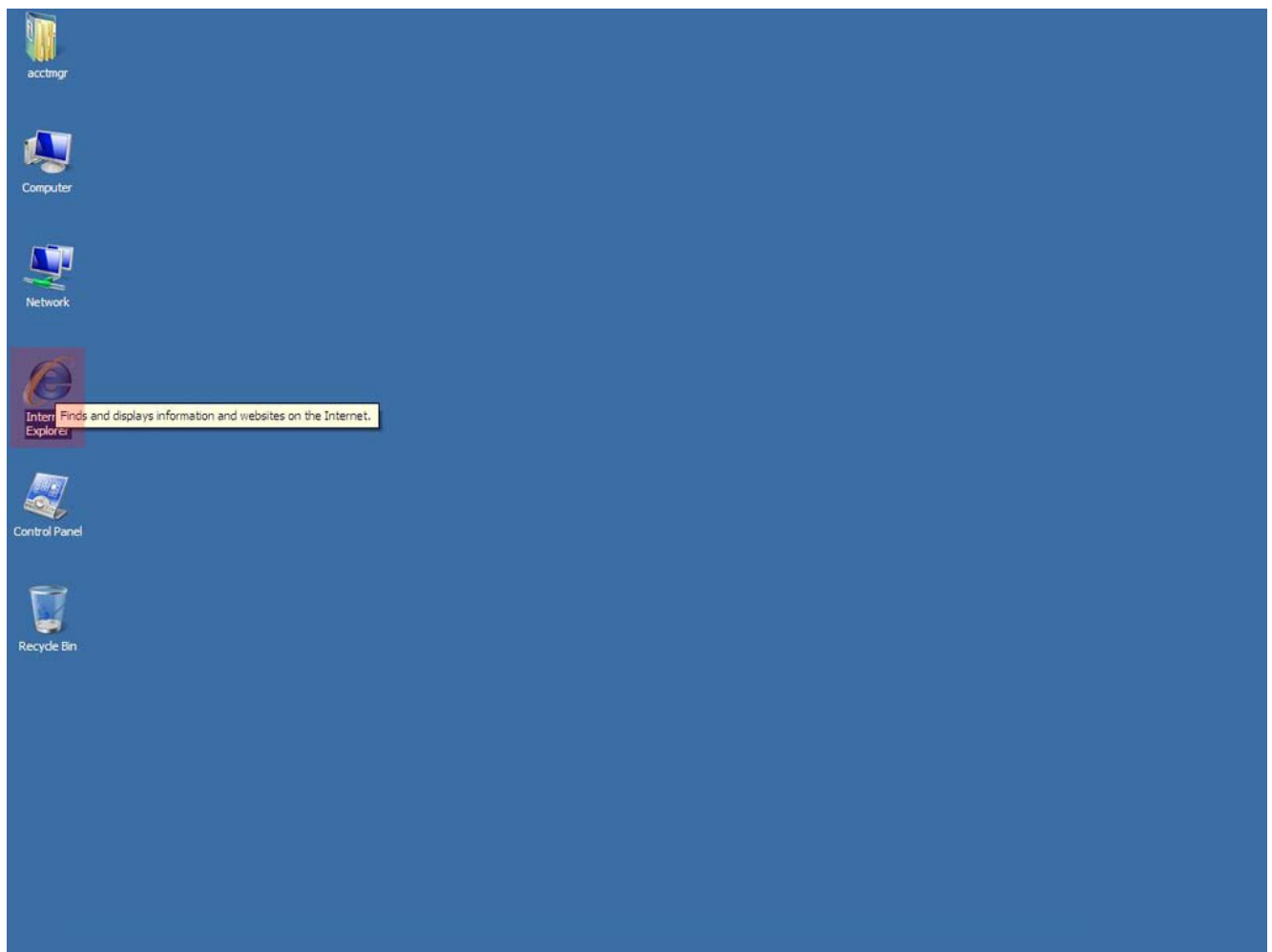


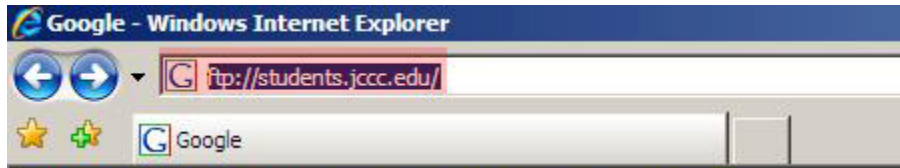
IE 7 Server Access: students.jccc.edu

Directions for users with Internet Explorer 7

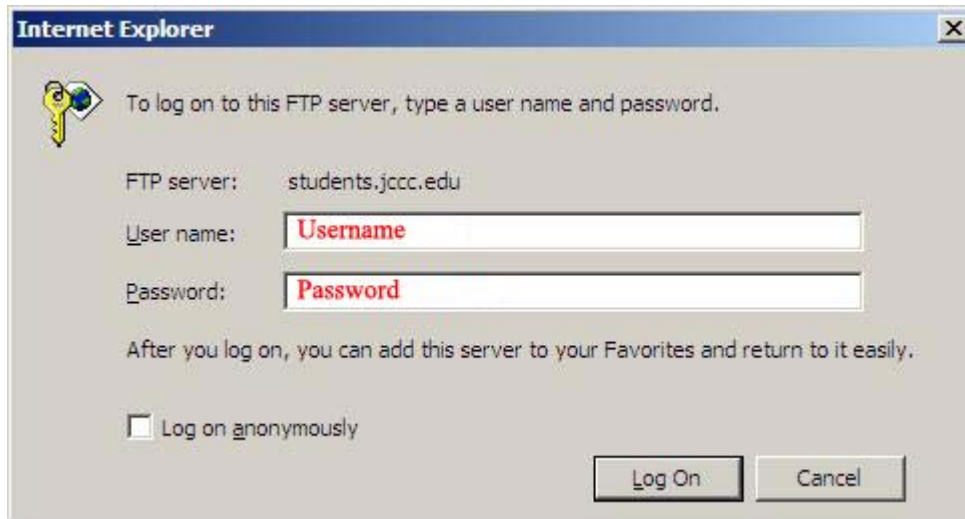
Open Windows Internet Explorer 7



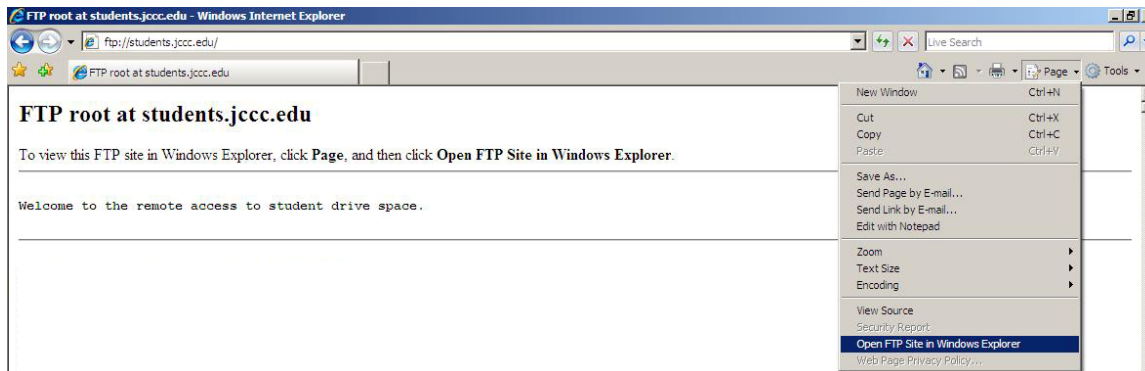
2. In the address bar go to [ftp://students.jccc.edu/](http://students.jccc.edu)

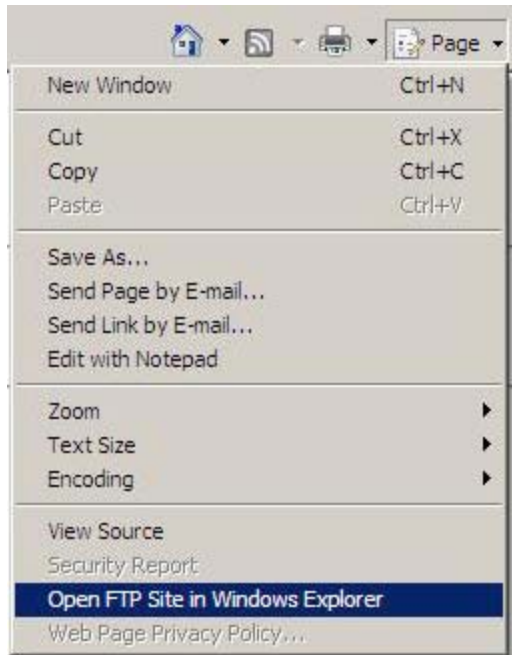


3. Type in your Username and Password. Then select Log on

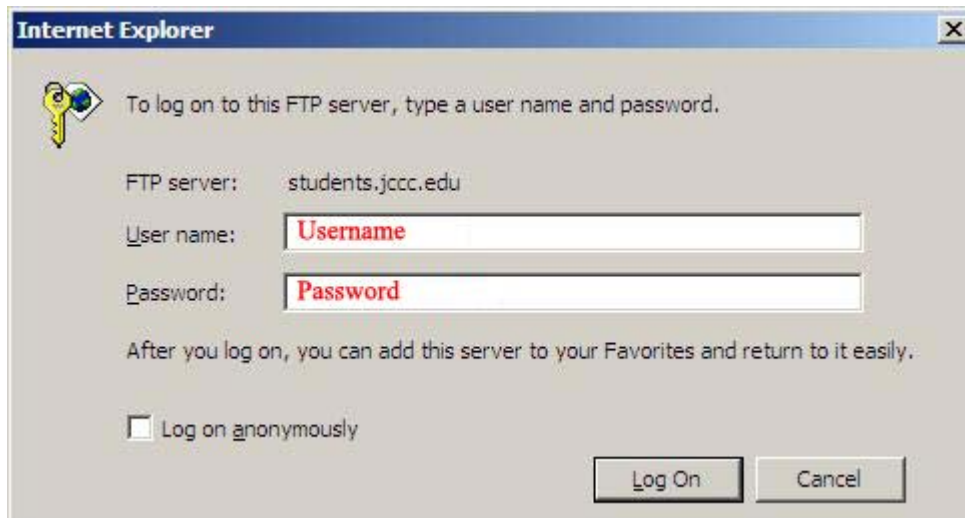


4. Select PAGE drop down menu. Then Select FTP Site in Windows Explorer

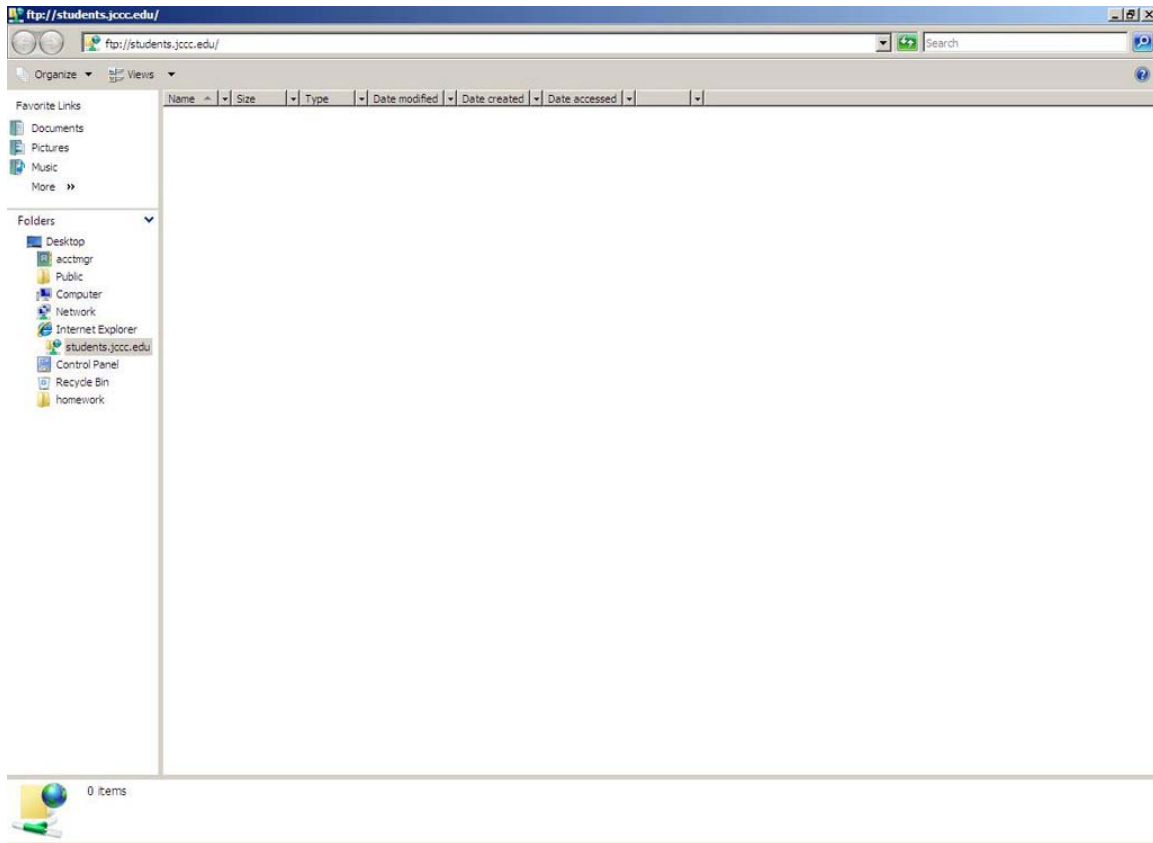




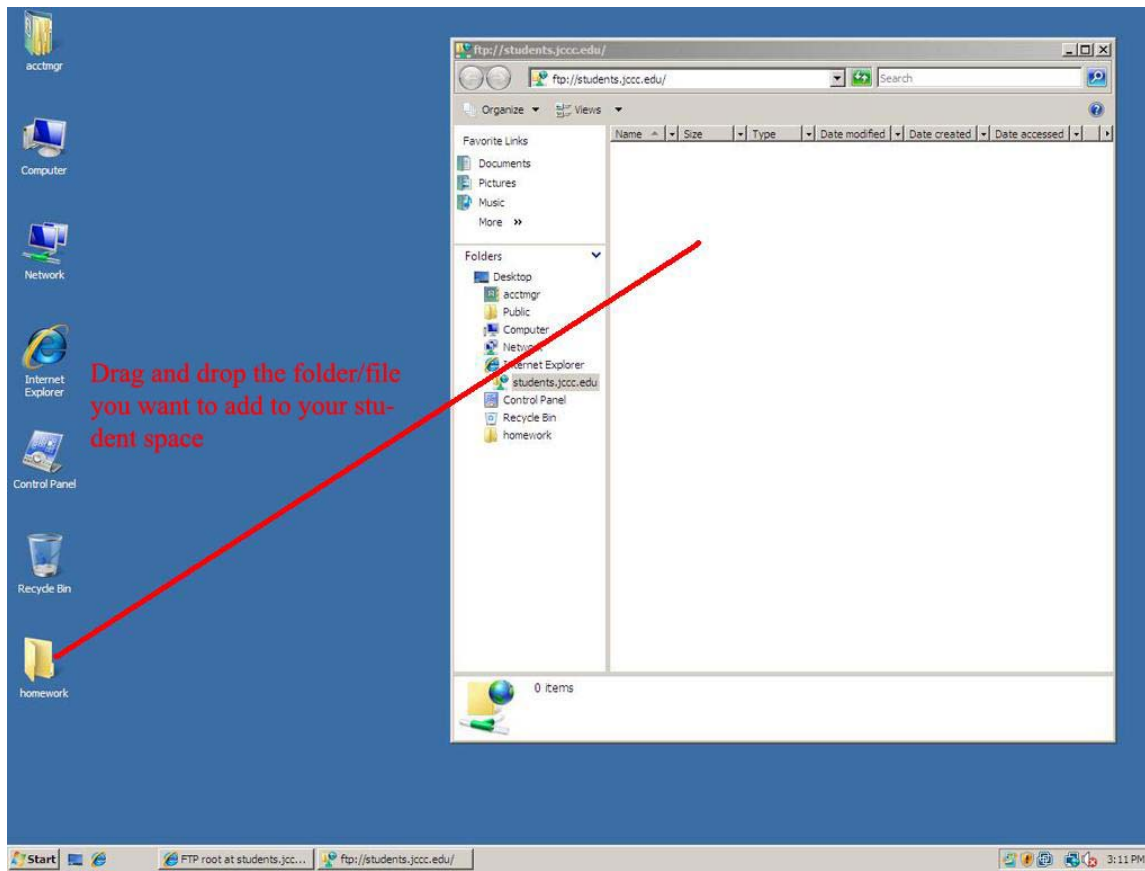
5. **Type your Username and Password. Then select Log On.**



6. **Now you will see your drive space**



7. **Simply drag and drop the folders/files in your space.**



8. Now your folders/files are in your drive space

