

students.jccc.edu Server Access

Connecting to the student server space from off campus using a Mac OS X workstation

All students at Johnson County Community College are given 500 Megabytes of personal drive space on JCCC's students server to store personal files, projects, and course materials. There is also an area on the student server used by the instructors to turn in homework and share out files.

This method can be used to access files from on campus as well but other preferred methods for accessing this space from on campus are available and documented at <http://helpdesk.jccc.edu>.

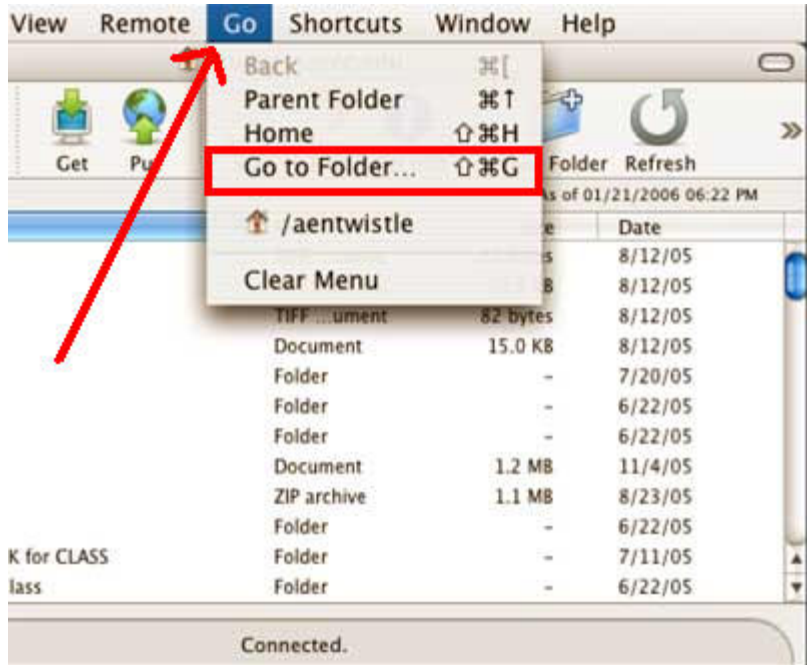
The purpose of this documentation is to show how to connect and disconnect from the student personal space using Mac OS X and Fetch FTP. Use the link below to download Fetch.

DOWNLOAD Fetch --- [click here](#)

Fetch: MAC OS X

Accessing the instructors folder on the students server Remotely using Fetch:

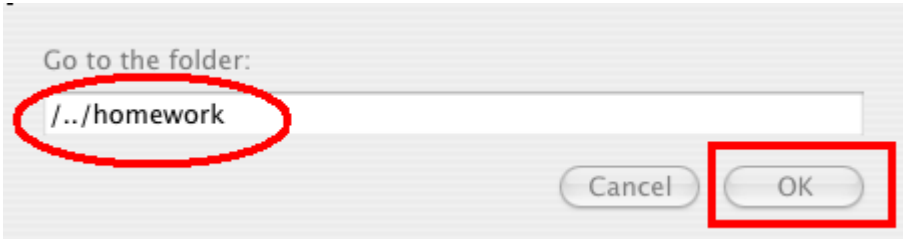
1. Follow the same instructions for connecting to your personal space from off campus using Fetch.
2. Once connected to fetch you will need to select the Fetch "Go" ➡ "Go to folder" option on the menu.



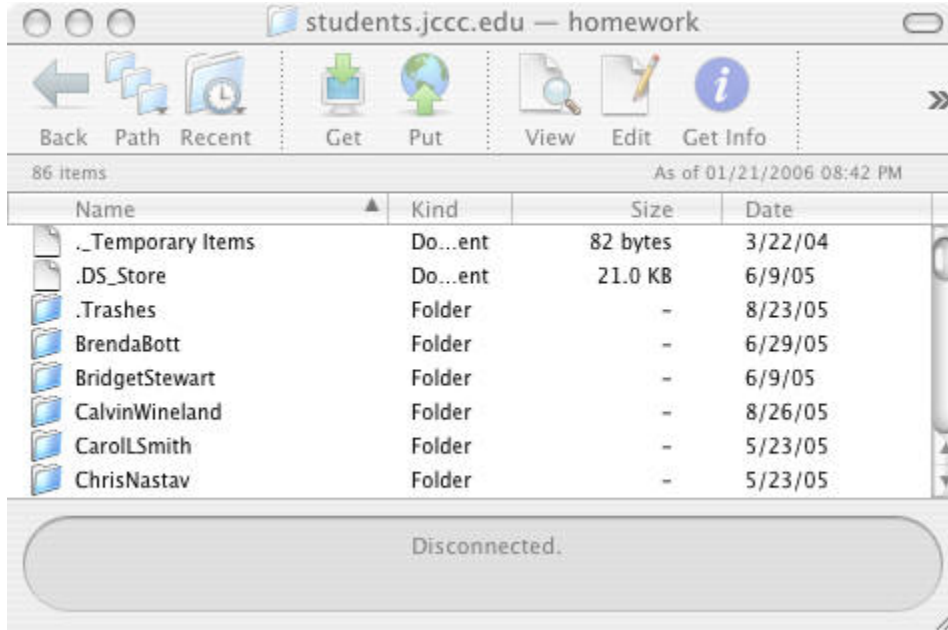
3. When the new window appears enter `../` followed by the folder name that you want to go to:

Example: to go to the homework folder you would type:

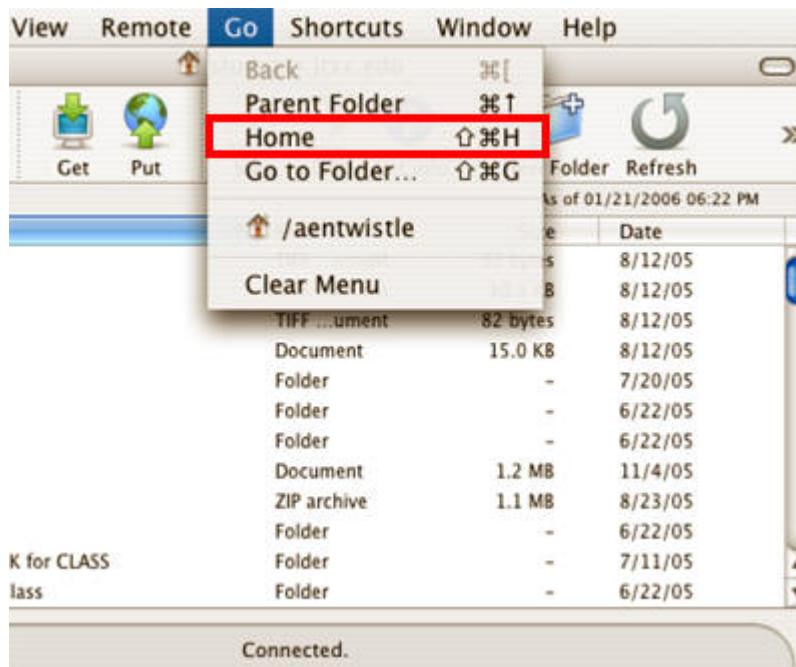
`../homework` and then click "Go".



4. Fetch should take you to the homework folder.



You can click the "Go" ➤ "Home" option from the top menu bar at any time to return to your personal directory.



Disconnecting from Fetch:

1. To exit out of the fetch program click the "Red" button in the upper left corner

