

Off campus ftp access students.jccc.edu Server

Connecting to the student server space from off campus using a Mac OS X workstation

All students at Johnson County Community College are given 500 Megabytes of personal drive space on JCCC's students server to store personal files, projects, and course materials. There is also an area on the student server used by the instructors to turn in homework and share out files.

This method can be used to access files from on campus as well but other preferred methods for accessing this space from on campus are available and documented at <http://helpdesk.jccc.edu>.

The purpose of this documentation is to show how to connect and disconnect from the student personal space using Mac OS X and Fetch. Use the link below to download Fetch.

DOWNLOAD Fetch --- [click here](#)

Fetch: MAC OS X

Accessing your home directory on the students server remotely using Fetch:

(**DOWNLOAD Fetch** --- [click here](#))

1. After downloading Fetch will automatically come up in a window. (Note: Fetch is usually located under Go→Applications→Fetch)

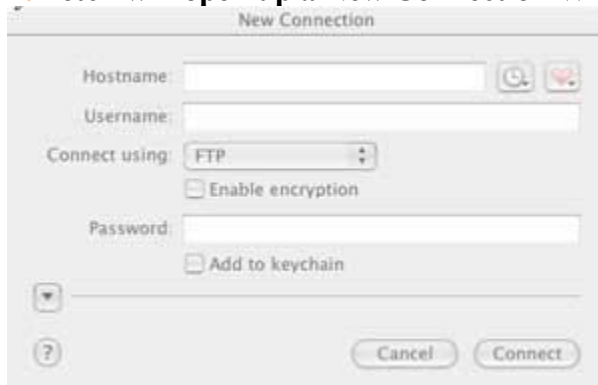
2. Drag Fetch (the dog) into the Application



folder

3. To open the Fetch client click Go→Applications→Fetch from the top tool bar then double click the fetch icon

4. Fetch will open up a New Connection Window

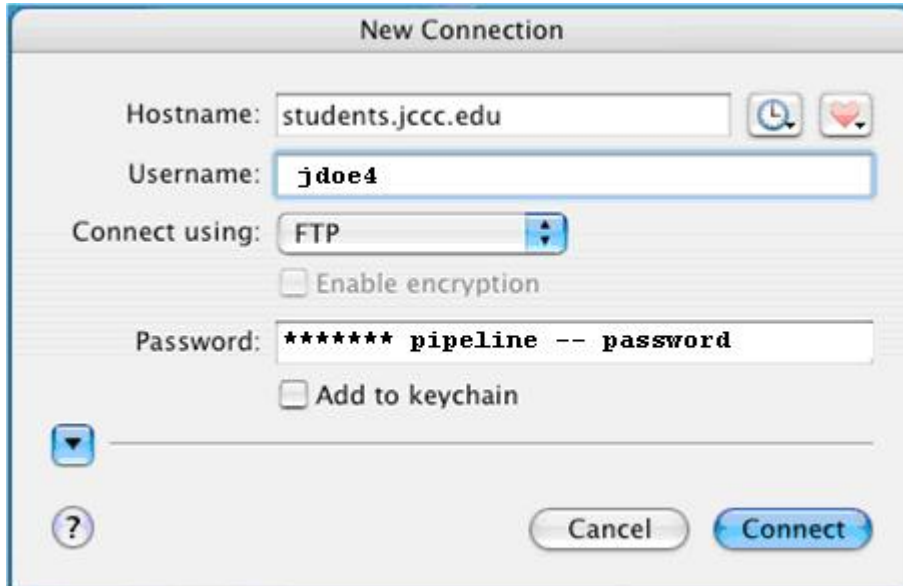


5. Add the following information in the text boxes of the New Connection Window

.

- **Hostname:** students.jccc.edu
- **Username:** Your Campus Pipeline username. (*Faculty/Instructor login will be slightly different see Instructors note below*)
- **Password:** Your 6 digit PIN (*Faculty member password login: see note below*)
- **Initial Path:** /username
- **Show Home Folder Only:** should be checked
- **Use Passive FTP:** should be checked

A student connection should look like this:

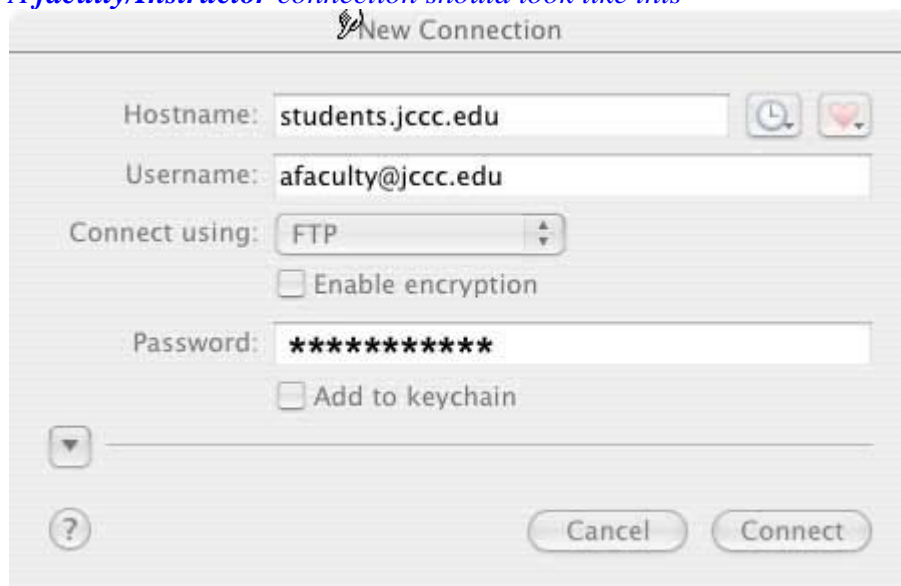


(Instructors Please Note:

An Instructor/faculty member will use a slightly different username for logging into the students.jccc.edu server through Fetch. Instructors will use their full email address for the user name. The password will be the same as your outlook email password.

example instructor login: .edu Outlook email Address for campus --
 user name: jdoe15@jccc.edu
 Password: campus outlook password.

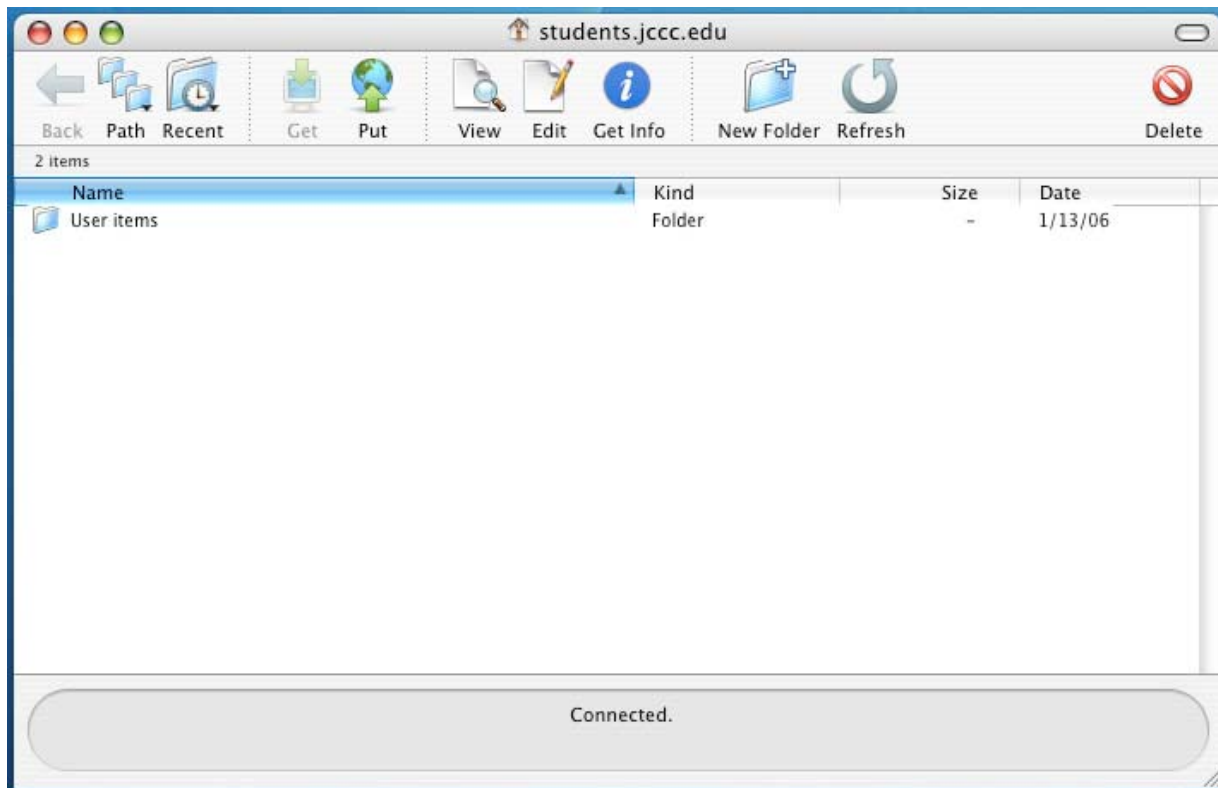
A faculty/Instructor connection should look like this



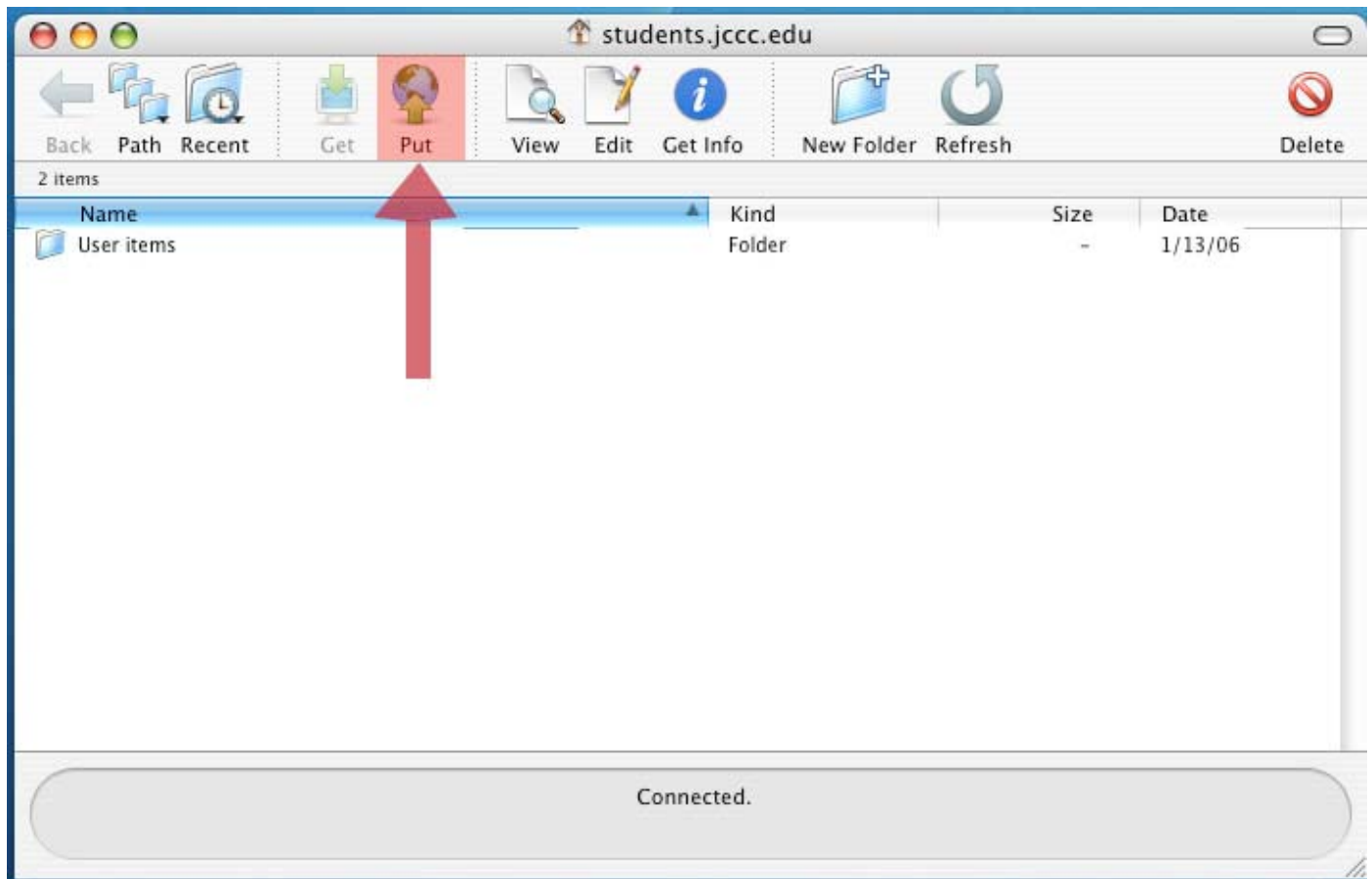
6. After entering in the required information from the New Connection dialog box click --> Connect

7. When connected you will see your personal home folder

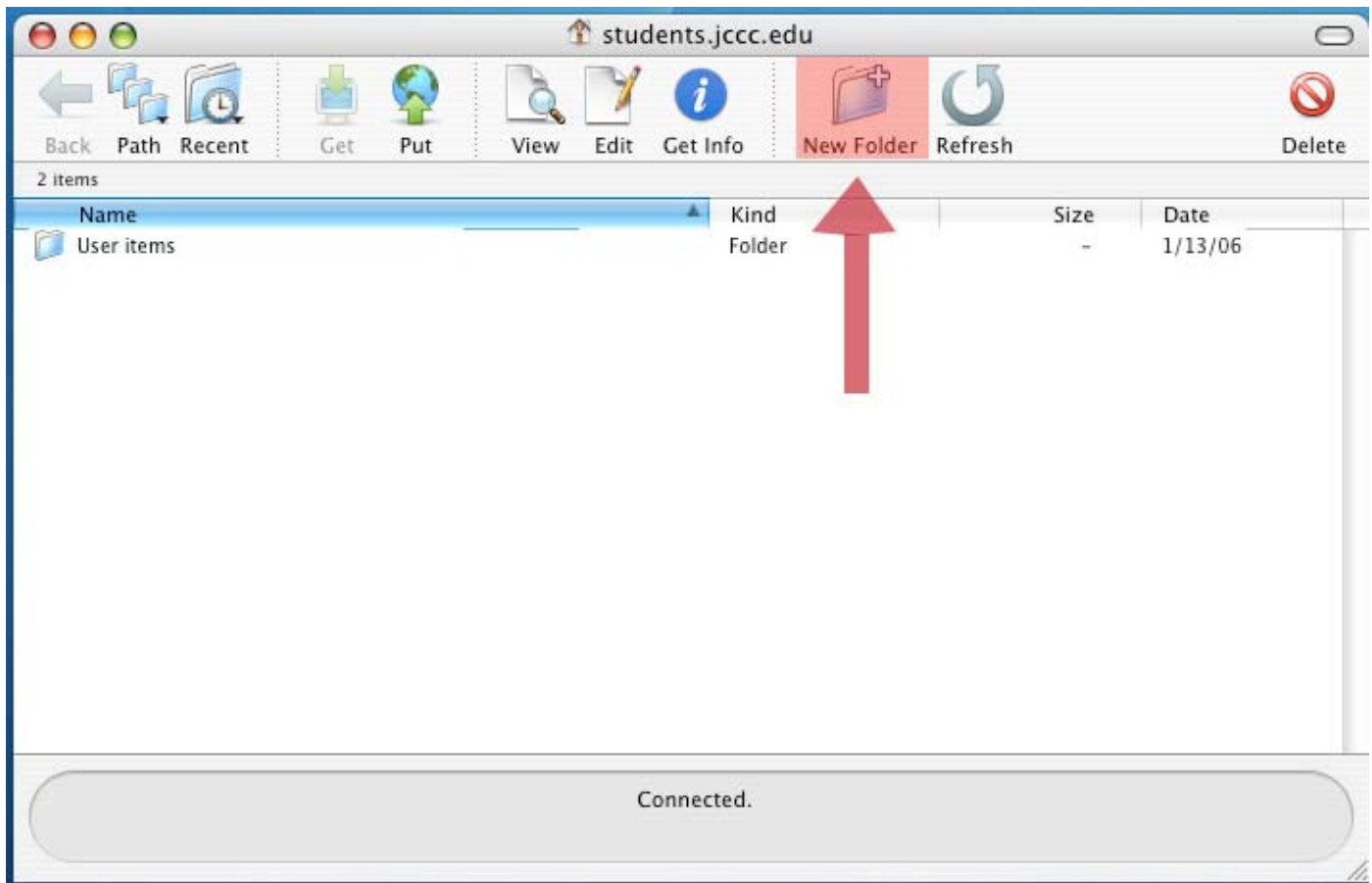
- For instructions on accessing the instructors "homework" folder or to access the CDTP folder go to <http://helpdesk.jccc.edu>.



8. To add your files you can drag and drop them into the folder or you can click the “Put” button in the toolbar



9. If you need to add a new folder you can click the “New Folder” button



10. To exit out of the Fetch program click the “Red” button in the upper left corner

