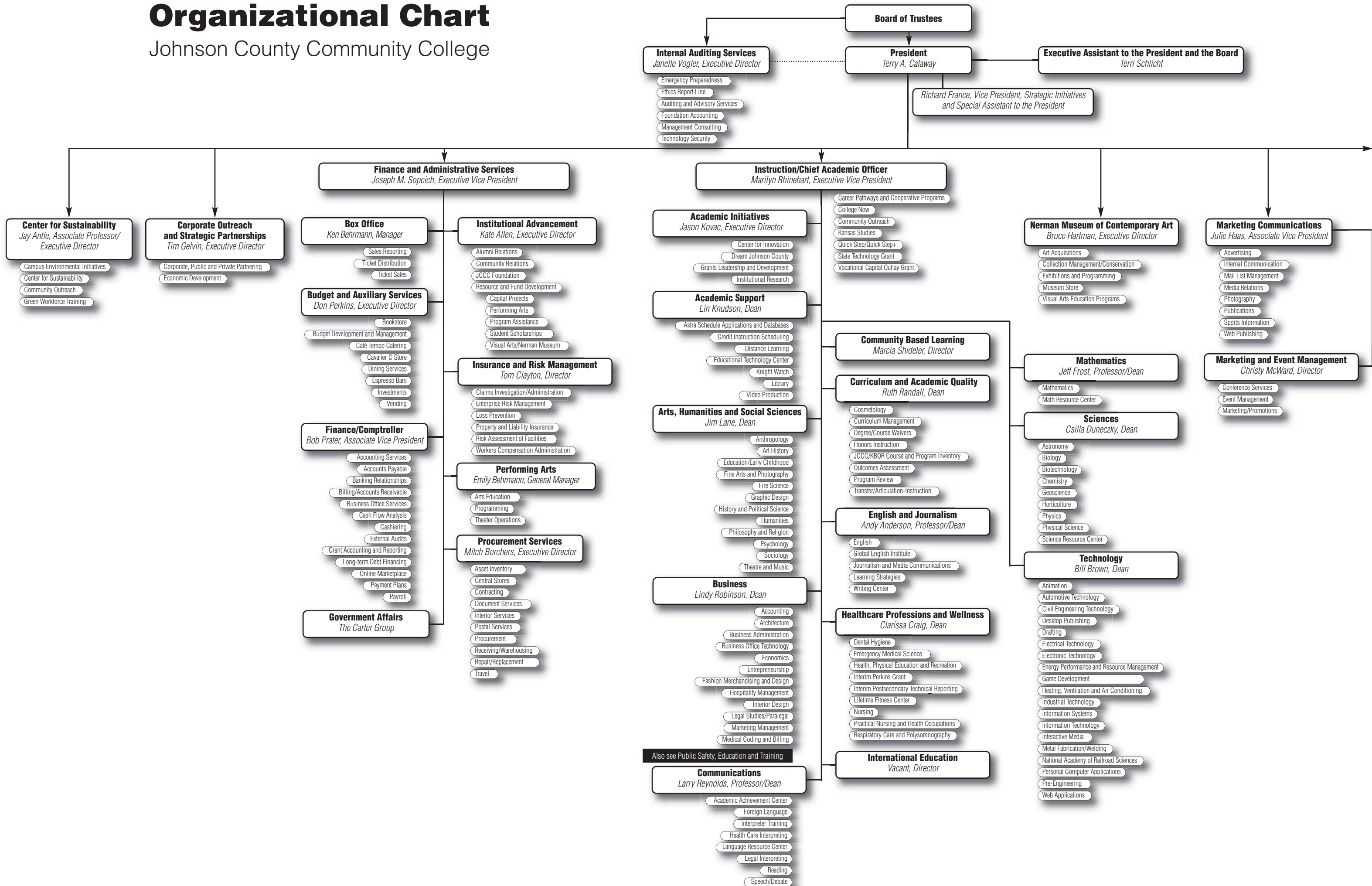


Organizational Chart

Johnson County Community College



Reports to the President

Educational Planning and Development/Chief Operating Officer
Dana Grove, Executive Vice President

Human Resources, Workforce and Community Development
Judy Korb, Executive Vice President

Campus Services
Rex Hays, Executive Director

- Construction Services
- Energy Management Systems
- Grounds and Landscaping
- Hazardous Materials
- Housekeeping and Custodial Services
- Maintenance
- Transportation Services
- Utilities

Information Services
Denise Moore, Vice President and Chief Information Officer

- Asset Management Systems

Academic Technology Services
Shannon Ford, Director

- Classroom and Computer Lab Technical Support
- E-Learning Systems Support
- Instructional Technology Acquisition (ITP)
- Technology Instruction Support

Administrative Computing Services
Sandra Warner, Director/Deputy CIO

- Administrative Systems Support
- Business Process Evaluation and Automation
- Database Administration
- Data Center Operations
- JCCC Internet Connection
- JCCC Network Support
- Reporting
- Voice Communications/Telephones
- Web Application Development

Client Support Services
Mary O'Sullivan, Director

- Administrative Technology Acquisition (ITP)
- Help Desk
- Multimedia Services
- Office Computing Support

Public Safety, Education and Training
Jerry Wolfskill, Associate Vice President

- Administration of Justice
- Corrections
- Human Services
- Law Enforcement
- Security

Police
Gus Ramirez, Chief

- Access Control
- Campus Security
- Communications Center
- Crime Prevention
- Parking Control

Public Safety Training Center
Larry Able, Program Director

Public Safety Continuing Education

- EMS
- Fire Science
- Law Enforcement

Regional Police Academy

- Administration of Justice
- Full-time Law Enforcement Certification
- Reciprocity Certification

Regional Police Academy reports to Instruction

Student Success and Engagement
Dennis Day, Vice President

Student Services and Success
Paul Kyle, Dean

Athletics
Carl Heinrich, Assistant Dean

- Intercollegiate Athletics

Enrollment Management
MargE Shelley, Assistant Dean

- Admissions
- Intercultural Center
- Records/Enrollment
- Success Center
- Veteran Affairs

Financial Aid
Vacant, Director

- Financial Aid
- Scholarships

Hiersteiner Child Development Center
Sara McElhenny, Director

- Accredited Child Care
- Early Childhood Education Lab

Testing/Assessment Services
Mary Ann Dickerson, Director

- ADA Testing
- Placement Assessment
- Prior Learning Assessment
- Testing

Learner Engagement and Success
Rick Moehring, Dean

Access Services for Students with Disabilities
Holly Dressler, Faculty Chair
Janna Willnauer, Supervisor

- Access Advising
- Interpreting
- Notetaking
- TIPS (Transition into Post-Secondary Studies)
- Tutoring

Career Development
Renee Arnett, Director

- Career Counseling
- Career Resource Center
- Job Search/Internships

CLEAR Program
Kathy Kennedy, Coordinator

Counseling Center
Alicia Bredehoeft, Faculty Chair

- Counseling and Advising
- Transfer Office

Learner Engagement Program Development
Mary Jean Billingsley, Program Director

Student Life and Leadership Development
Pam Vassar, Assistant Dean

- Brown and Gold Club
- Campus Ledger
- Cavalier Leadership Development Program
- Center for Student Involvement
- Dance Team
- Student Activities Desk
- Student Radio Station
- Student Senate

Small Business Development Center
Malinda Bryan-Smith, Regional Director

Community, Workforce and Staff Development
Karen Martley, Executive Director

- Business Development and Solutions
- Computer Applications and Information Technology
- Consultant Development and Evaluation
- Contract Training
- Economic Development
- Faculty Development
- Health and Human Services
- Market Development
- Professional Education
- Staff Development
- Technical Training

Workforce Development and Operations
Mike Souder, Dean

- Budgeting
- Curriculum
- Grants and Contract Management
- Operations
- State Education and Government
- Special Programs/Trades and Business
- Strategic Partnerships
- Workforce Development

Community Services
Debbie Rulo, Director

- Adult Basic Education
- Business Language Services
- Career Services for Business
- Community Career Development
- Community English as a Second Language
- Community Forums
- Gallaudet University Regional Center
- Migrant Family Literacy
- Personal Enrichment
- Skills Enhancement
- Youth Programming

Operations
Jeff Hoyer, Director

- RC Operations
- WCED Registration and Scheduling

Benefits

Human Resources
Becky Centlivre, Executive Director

- Compensation
- Employee Relations
- Employment
- Job Requisitions
- Advertising
- Recruitment
- Candidate Assessments
- Interview, Hiring Processes
- Employment Laws/Regulations
- Job Evaluations
- Performance Evaluations
- Personnel Policies
- Position Control

National Higher Education Benchmarking Project
Jeff Seybert, Director

- Kansas Study of Community College Instructional Costs and Productivity
- National Community College Benchmark Project

General Counsel
Tanya Wilson